

The

P H O T O

# REVIEW

N E W S L E T T E R

February / March 2014



Robert Heinecken

*Cybill Shepherd/Phone Sex*. 1992, dye bleach print on foamcore, 63"×17". (The Robert Heinecken Trust, Chicago; courtesy Petzel Gallery, New York. © 2013 The Robert Heinecken Trust)

At the Museum of Modern Art, New York

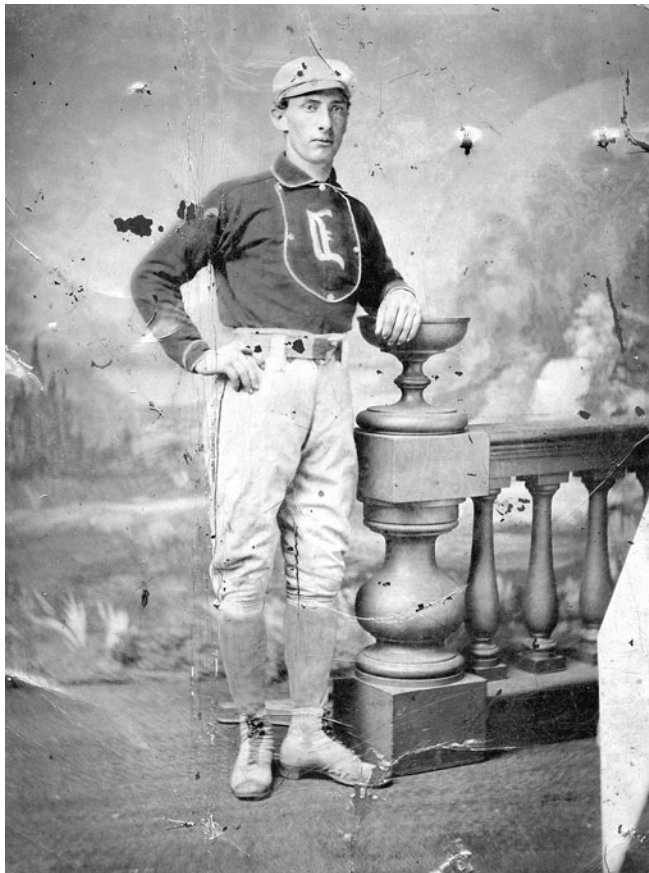
# Exhibitions

## PHILADELPHIA AREA

**Alien She** Vox Populi, 319 N. 11th St., 3rd fl., Philadelphia, PA 19107, 215/23 8-1236, [www.voxpopuligallery.org](http://www.voxpopuligallery.org), T–Sun 12–6, March 7 – April 27. Includes photography.

**Artists of a Certain Age** Philadelphia Episcopal Cathedral, 3723 Chestnut St., Philadelphia, PA 19104, 267/386-0234 x104, daily 10–4 and by appt., through February 28. Includes photography by William Brown and Arlene Love.

**Donald E. Camp/Lydia Panas/Lori Waselchuk** “Humankind,” Main Line Art Center, 746 Panmure Rd., Haverford, PA 19041, 610/525-0272, [www.mainlineart.org](http://www.mainlineart.org), M–Th 10–8, F–Sun 10–4, through March 20. Reception, Friday, February 21, 6–8 PM. Panel Discussion and Book Signing, Wednesday, March 19, 6–8 PM.



*Rudolph Kalish, 1870. Kalish played third base for the Live Oak of Cincinnati in 1870, an amateur club that lost twice to the fabled Cincinnati Red Stockings (courtesy of Peter S. Horvitz), at the National Museum of American Jewish History*

**Chasing Dreams: Baseball and Becoming American** The National Museum of American Jewish History, 101 South Independence Mall East, Philadelphia, PA 19106, 215/923-3811, [www.nmajh.org](http://www.nmajh.org), T–F 10–5, Sat–Sun 10–5:30, March 13 – October 26.

**Alex Damevski** “Paired,” Bucks County Project Gallery, 252 W. Ashland St., Doylestown, PA 18901, 267/247-6634, [www.buckscountyprojectgallery.com](http://www.buckscountyprojectgallery.com), Th–F 12–4, F–Sat 1–5, through February 28.

**Maria Dumlao/Jay Muhlin** Vox Populi, 319 N. 11th St., 3rd fl., Philadelphia, PA 19107, 215/23 8-1236, [www.voxpopuligallery.org](http://www.voxpopuligallery.org), T–Sun 12–6, through March 2.

**Germán Gomez** “Deconstructing Cities and Duos,” Bridgette Mayer Gallery, 709 Walnut St., Philadelphia, PA 19106, 215/413–8893, [www.bridgettemayergallery.com](http://www.bridgettemayergallery.com), T–Sat 11–5:30 and by appt., through February 22.

**Graffiti, Murals, and Tattoos** “Paired,” Bucks County Project Gallery, 252 W. Ashland St., Doylestown, PA 18901, 267/247-6634, [www.buckscountyprojectgallery.com](http://www.buckscountyprojectgallery.com), Th–F 12–4, F–Sat 1–5, March 8 – April 6.

**David Graham** “Thirty-Five Years / 35 Pictures,” Gallery 339, 339 S. 21st St., Philadelphia, PA 19103, 215/731-1530, [www.gallery339.com](http://www.gallery339.com), T–Sat 10–6, through March 15.

**Jefferson Hayman** Wexler Gallery, 201 N. 3rd St., Philadelphia, PA 19106, 215/923-7030, [www.wexlergallery.com](http://www.wexlergallery.com), T–Sat 10–6, M by appt., through March 1.

**Regina Joans** “As I Go,” Twenty-Two Gallery, 236 S. 22nd St., Philadelphia, PA 19103, 215/772-1911, [www.twenty-twogallery.com](http://www.twenty-twogallery.com), W–Sun 12–6 and by appt., through March 9.

**ICA@50: Pleasing Artists and Publics Since 1963** Institute of Contemporary Art, 118 S. 36th St., Philadelphia, PA 19104, 215/898-7108, [www.icaphila.org](http://www.icaphila.org), W 11–8, Th–F 11–6, Sat–Sun 11–5, through August 17.

**Paul Justice** “Breathing Pictures,” Gallery 1401, The University of the Arts, 211 S. Broad St., 14th fl., Philadelphia, PA 19102, 215/717-6300, [www.uarts.edu](http://www.uarts.edu), M–F 10–5, Sat–Sun by appt., through March 14.



*Joel Katz: Unidentified spectators at a rally for Alabama governor George C. Wallace for president at the Mississippi Coliseum in Jackson, 25 June 1964, from “And I Said No Lord,” at The Galleries at Moore, Moore College of Art and Design, Philadelphia*

**Joel Katz** “And I Said No Lord,” The Galleries at Moore, Moore College of Art and Design, 20th St. & the Parkway, Philadelphia, PA 19103, 215/965-4027, [www.moore.edu](http://www.moore.edu), T–F 11–7, Sat 11–5, through March 15.

**Vita Litvak** “Я Подарю Тебе Мир (I Will Give You the World) and Other Promises,” Atrium Gallery, Marshall Fine Arts Center, Haverford College, 370 Lancaster Ave., Haverford, PA 19041, 610/896-1267, [www.haverford.edu](http://www.haverford.edu), M–F 10–5, Sat–Sun 12–5, through April 20.

**Leah Macdonald** “In My Body: Narratives, Anxieties, and Celebrations,” Grace and Joseph Gorevin Fine Arts Gallery, Holy Spirit Library, Cabrini College, 610 King of Prussia Rd., Radnor, PA 19087, 610/902-8380, [www.cabrini.edu](http://www.cabrini.edu), through March 31.



© Lydia Panas 2005

© Donald E. Camp 2008



© Lori Waselchuk 2008

Featuring photographers **Donald E. Camp**, **Lydia Panas**, and **Lori Waselchuk**, *Humankind* presents works that uniquely address the human condition through qualities and genres inherent to the photographic tradition: social responsibility, portraiture, and the photo essay. Presented in collaboration with our new digital media program, this exhibition curated by Amie Potsic, features photography by accomplished artists whose work creatively engages the world of contemporary photography.



746 Panmure Rd., Haverford, PA 19041

**GALLERY HOURS:**  
 Monday - Thursday: 10 am to 8 pm  
 Friday - Sunday: 10 am to 4 pm  
 Free and open to the public

 [mainlineart.org](http://mainlineart.org)  
 610.525.0272  
 [facebook.com/mainlineart](https://facebook.com/mainlineart)

**RECEPTION:** Friday, February 21, 6 - 8 pm  
**ARTIST TALK & BOOK SIGNING:** Wednesday, March 19, 6 - 8 pm



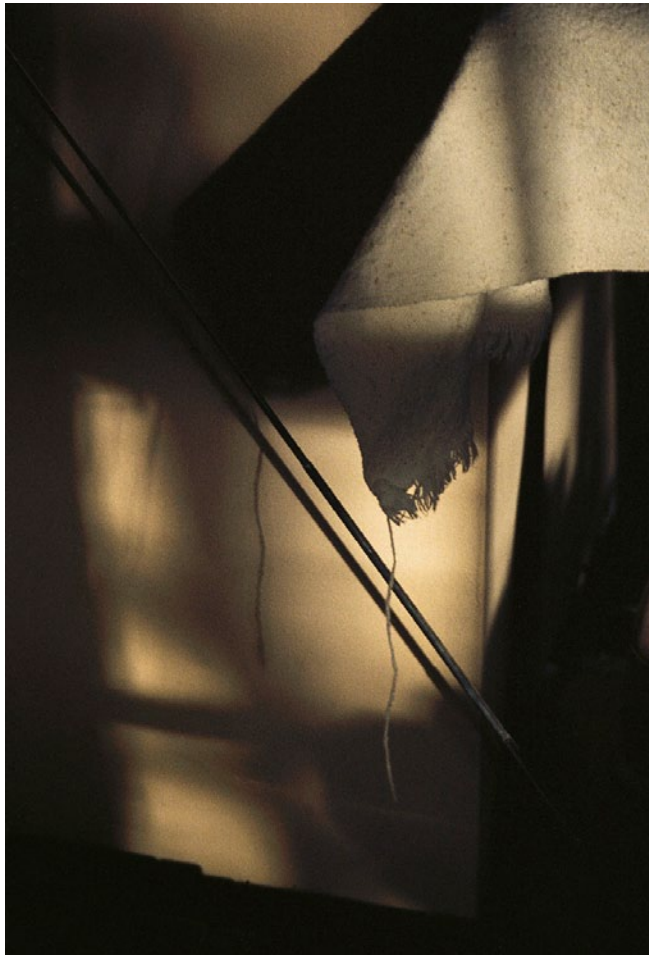
## PHILADELPHIA AREA continued

**Make & Do** Philadelphia Photo Arts Center, 1400 N. American St., Ste. 103, Philadelphia, PA 19122, 215/232-5678, [www.philaphotoarts.org](http://www.philaphotoarts.org), T-W 10-9, Th-F 10-7, Sat-Sun 12-6, through February 22.

**Anne Leighton Massoni** "Holding Pepina," The Sol Mednick Gallery, University of the Arts, The Terra Building, 211 S. Broad St., 15th fl., Philadelphia, PA 19102, 215/717-6300, [www.uarts.edu](http://www.uarts.edu), M-F 10-5, Sat-Sun by appt., through March 14.

**Eric Mencher** "Wallpaper," Photo Lounge, 1909 Chestnut St., Philadelphia, PA 19103, 267/322-6651, [www.myphotolounge.com](http://www.myphotolounge.com), M-F 9:30-6:30, Sat 11-4, through March.

**Nikon Small World Exhibit 2014: Insight into a Microscopic World** The Wistar Institute, 3601 Spruce St., Philadelphia, PA 19104, 215/898-3930, [www.wistar.org](http://www.wistar.org), M-F 9-5, through March 7.



**Brian H. Peterson:** *Interior Light #12*, 2003, archival digital print (courtesy Santa Bannon/Fine Art), at Ursinus College, Collegeville, PA

**Brian H. Peterson** "Only Connect," The Philip and Muriel Berman Museum of Art at Ursinus College, 601 E. Main St., Colleagueville, PA 19426, 610/409-3500, [www.ursinus.edu](http://www.ursinus.edu), T-F 1-4, Sat-Sun 12-4:30, through March 9.

**Prison Obscura** Cantor Fitzgerald Gallery, Haverford College, 330 Lancaster Ave., Haverford, PA 19041, 610/896-1287, [www.haverford.edu/exhibits](http://www.haverford.edu/exhibits), M-F 11-5, W 11-8, Sat-Sun 12-5, through March 7.

**Amie Potsic** "Frost," The Schuylkill Center for Environmental Education, 8480 Hagy's Mill Rd., Philadelphia, PA 19128, 215/482-7300, [www.schuylkillcenter.org](http://www.schuylkillcenter.org), M-Sun 8:30-4:30, through April 18.



**Amie Potsic:** *Endangered Seasons* (detail), from "Frost" at the Schuylkill Center for Environmental Education, Philadelphia

**B. Proud** "First Comes Love," William Way LGBT Community Center, 1315 Spruce St., Philadelphia, PA 19107, 215/732-2220, [www.waygay.org](http://www.waygay.org), M-F 11-10, Sat-Sun 12-5, through February 28.

**Ruffneck Constructivists** Institute of Contemporary Art, 118 S. 36th St., Philadelphia, PA 19104, 215/898-7108, [www.icaphila.org](http://www.icaphila.org), W 11-8, Th-F 11-6, Sat-Sun 11-5, through August 17.

**Jill Saull** "Blink," Imperfect Gallery, 5601 Greene St., Philadelphia, PA 19144, 215/869-1001, W-Sat 1-6 or by appt., through March 8.

**Sensing Change** Chemical Heritage Foundation, 315 Chestnut St., Philadelphia, PA 19106, 215/925-2222, [www.chemheritage.org](http://www.chemheritage.org), Th 10-4, through May 2.

**Yinka Shonibare MBE** "Magic Ladders," The Barnes Foundation, 2025 Benjamin Franklin Parkway, Philadelphia, PA 19130, 215/278-7000, [www.barnesfoundation.org](http://www.barnesfoundation.org), M, W & Th 10-6, F 10-10, Sat-Sun 10-8, through April 21.

**Michael Snow** "Photo-Centric," Honickman Gallery, Philadelphia Museum of Art, 26th St. & the Parkway, Philadelphia, PA 19130, 215/684-7695, [www.philamuseum.org](http://www.philamuseum.org), T-Sun 10-5, W & F 10-8:45, through April 27.

**Ruth Thorne Thomsen** "Messengers," Schmidt/Dean Gallery, 1719 Chestnut St., Philadelphia, PA 19103, 215/569-9433, [www.schmidtdean.com](http://www.schmidtdean.com), T-Sat 10:30-6, March 8 - April 12. Reception, Saturday, March 8, 3-6 PM.

**Tierra Reveladora** Off the Wall Gallery@Dirty Frank's Bar, 347 S. 13th St., Philadelphia, PA 19107, 11-2, through February 28. Includes photographs by Rick Wright.

**2013 Drexel University High School Photography Contest** Photography Gallery, Paul Peck Problem Solving and Research Bldg., 101 N. 33rd St., Philadelphia, PA 19104, 215/895-5868, M-Sat 9-10, Sun 12-8, through March 10.

**Sarah Van Keuren** "I Began with Painting," The Sol Mednick Gallery, University of the Arts, The Terra Building, 211 S. Broad St., 15th fl., Philadelphia, PA 19102, 215/717-6300, [www.uarts.edu](http://www.uarts.edu), M-F 10-5, Sat-Sun by appt., March 21 - April 25.

**Frederick Weber** "Domestic Views," Gallery 1401, The University of the Arts, 211 S. Broad St., 14th fl., Philadelphia, PA 19102, 215/717-6300, [www.uarts.edu](http://www.uarts.edu), M-F 10-5, Sat-Sun by appt., March 21 - April 25.



**Ruth Thorne-Thomsen:** *Messenger #4, France*, 1990, toned silver print, 28"x41", at Schmidt/Dean Gallery, Philadelphia

**John Woodin** "Un-natural Landscape," The Hall, Crane Arts Building, 1400 N. American St., Philadelphia, PA 19122, 215/232-3203, [www.cranearts.com](http://www.cranearts.com), W–Sun 12–6, through March 8.

**Works in Color: Selections from the Haverford Fine Art Photography Collection** Magill Alcove Gallery, James P. Magill Library, Haverford College, 370 Lancaster Ave., Haverford, PA 19041, [www.haverford.edu/exhibits](http://www.haverford.edu/exhibits), M–F 8:30 AM – 9 PM, Sat–Sun 10–9, through March 9.

## NEW YORK CITY: DOWNTOWN AND SOHO

**Amy Arbus** "On the Street 1980–1990," Leica Gallery, 670 Broadway, NY, NY 10012, 212/777-3051, [leica-camera.com](http://leica-camera.com), T–F 11–6, Sat 12–6, through April 19.

**Lee Backer/Neil Lawner/Elizabeth Nahum-Albright/Sonia Toledo/Lois Youmans** "Surroundings," Soho Photo, 15 White St., NY, NY 10013, 212/226-8571, [www.sohophoto.com](http://www.sohophoto.com), W–Sun 1–6 and by appt., March 5–29. Reception, March 4, 6–8 PM.

**David Barary** "Manhattan Viewed from High in the Air," MTA Arts for Transit, Bowling Green Subway Station, Broadway and Battery Place, NY, NY, through 2014.

**Richard Barnes** "Murmur & Refuge," Foley Gallery, 97 Allen St., NY, NY 10002, 212/244-9081, [www.foleygallery.com](http://www.foleygallery.com), W–Sun 2–6, through February 23.

**Heather Bennett** "Four Stories," Stephan Stoyanov, 29 Orchard St., NY, NY 10002, 212/343-4240, [www.stephanstoyanovgallery.com](http://www.stephanstoyanovgallery.com), W–Sat 11–6, Sun 12–6, March 2 – April 18.

**Michael Bühler-Rose** "Spirit & Matter," Scaramouche Gallery, 52 Orchard St., NY, NY 10002, 212/228-2229, [www.scaramoucheart.com](http://www.scaramoucheart.com), W–Sat 12–6, Sun 1–5, and by appt., through March 30.

**Richard Caldicott** "Recent Work," Sous Les Etoiles, 560 Broadway, Ste. 603, NY, NY 10012, 212/966-0796, [www.souslese-toilesgallery.net](http://www.souslese-toilesgallery.net), M–F 10–6, through March 29.

**Lance W. Clayton** Robin Rice Gallery, 325 W. 11th St., NY, NY 10014, 212/366-6660, [www.robinricegallery.com](http://www.robinricegallery.com), W–Sun 12–7, March 19 – April 27.

**Rick DeMint** "Portroids," The Impossible Project Space, 425 Broadway, 5th fl., NY, NY 10013, 212/219-3254, [www.the-impossible-project.com](http://www.the-impossible-project.com), M–F 11–7, Sat 12–5, through March 27.

**Leonard Freed** "Black in White America," Leica Gallery, 670 Broadway, NY, NY 10012, 212/777-3051, [leica-camera.com](http://leica-camera.com), T–F 11–6, Sat 12–6, through February 22.

**Max Fujishima** "Wish You Were Here—New York to Egypt and Beyond," Gallery Onetwentyeight, 128 Rivington St., NY, NY 10002, 212/674-0244, [www.galleryonetwentyeight.org](http://www.galleryonetwentyeight.org), W–Sat 1–7, Sun 1–5, through March 1.

**Yishay Garbasz** "Ritual and Reality," Ronald Feldman Fine Arts, 31 Mercer St., NY, NY 10013, 212/226-3232, [www.feldmangallery.com](http://www.feldmangallery.com), T–Sat 10–6, through March 22.

**Andrew Garn** "The New York Pigeon," O.K. Harris Works of Art, 383 W. Broadway, NY, NY 10012, 212/431-3600, [www.okharris.com](http://www.okharris.com), T–Sat 10–6, through March 1.

**Nikolai Ishchuk** "Indeterminate Objects," Denny Gallery, 261 Broome St., NY, NY 10002, 212/266-6537, [elizabeth@dennygalleries.com](mailto:elizabeth@dennygalleries.com), W–Sun 11–6 and by appt., through March 16.

**Paul Kessel** "Williamsburg, Old and New," Umbrella Arts, 317 E. 9th St., NY, NY 10003, 212/505-7196, [www.umbrellaarts.com](http://www.umbrellaarts.com), T–Sat 12–6, through March 1.

**Annie Ling** "A Floating Population," Museum of Chinese in America, 215 Centre St., NY, NY 10013, 212/619-4686, [www.mocanyc.org](http://www.mocanyc.org), M & F 11–5, T 11–9, Sat–Sun 10–5, through April 13.

**Judy Linn** Feature Inc., 131 Allen St., NY, NY 10002, 212/675-7772, [www.featureinc.com](http://www.featureinc.com), W–Sun 12–6, February 19 – March 23. Reception Saturday, February 22, 6–8 PM.

**Matthew Pillsbury** "Nate and Me," Sasha Wolf Gallery, 70 Orchard St., NY, NY 10002, 212/925-0025, [www.sashawolf.com](http://www.sashawolf.com), W–Sun 12–6, through February 26 – April 20. Opening reception, February 26, 6–8 PM.

**Portraits of New York Chinatown** Museum of Chinese in America, 215 Centre St., NY, NY 10013, 212/619-4686, [www.mocanyc.org](http://www.mocanyc.org), M & F 11–5, T 11–9, Sat–Sun 10–5, through April 13.

**Alex Prager** "Face in the Crowd," Lehmann Maupin, 201 Chrystie St., NY, NY 10002, 212/254-0054, [www.lehmannmaupin.com](http://www.lehmannmaupin.com), T–F 11–6, and by appt., through February 22.

**Priscilla Rattazzi** "Selected Photographs: 1975–2013," Staley/Wise Gallery, 560 Broadway, NY, NY 10012, 212/966-6223, [www.staleywise.com](http://www.staleywise.com), T–Sat 11–5, through February 22.

**Real and Surreal** Staley/Wise Gallery, 560 Broadway, NY, NY 10012, 212/966-6223, [www.staleywise.com](http://www.staleywise.com), T–Sat 11–5, February 28 – April 19.

**Lyn Savarese** "My Still Life Aviary," Umbrella Arts, 317 E. 9th St., NY, NY 10003, 212/505-7196, [www.umbrellaarts.com](http://www.umbrellaarts.com), T–Sat 12–6, March 4–29.

## NEW YORK CITY: DOWNTOWN AND SOHO *continued*

**Zack Seckler** “Botswana,” Robin Rice Gallery, 325 W. 11th St., NY, NY 10014, 212/366-6660, [www.robinricegallery.com](http://www.robinricegallery.com), W–Sun 12–7, through February 23.

**16th Annual International Krappy Camera Competition Winners** Soho Photo, 15 White St., NY, NY 10013, 212/226-8571, [www.sohophoto.com](http://www.sohophoto.com), W–Sun 1–6 and by appt., through March 1.

**Curtice Taylor** “Transforming Nature: Gardens and Landscapes 1985–2011,” Leica Gallery, 670 Broadway, NY, NY 10012, 212/777-3051, [leica-camera.com](http://leica-camera.com), T–F 11–6, Sat 12–6, through April 19.

**The Lee Family of New York Chinatown Since 1888** Museum of Chinese in America, 215 Centre St., NY, NY 10013, 212/619-4686, [www.mocanyc.org](http://www.mocanyc.org), M & F 11–5, T 11–9, Sat–Sun 10–5, through April 13.

**Those Lovable Lads From Liverpool** Morrison Hotel, 124 Prince St., NY, NY 10012, 212/941-8770, [www.morrisonhotelgallery.com](http://www.morrisonhotelgallery.com), M–Th 11–6, F–Sat 11–7, through March 1.

**Tribble & Mancenido** “Lost Ones,” Sasha Wolf Gallery, 70 Orchard St., NY, NY 10002, 212/925-0025, [www.sashawolf.com](http://www.sashawolf.com), W–Sun 12–6, through February 23.

**21st Annual Soho Photo Artists’ Krappy Camera Competition** Soho Photo, 15 White St., NY, NY 10013, 212/226-8571, [www.sohophoto.com](http://www.sohophoto.com), W–Sun 1–6 and by appt., through March 1.

**Karlheinz Weinberger** “Portraits, 1959–1987,” Maccarone, 98 Morton St., New York, NY 10014, 212/431-4977, <http://www.maccarone.net>, T–Sat 10–6, through March 29.

**John Whitaker** “Black and White Swan,” Leica Store New York, 460 W. Broadway, NY, NY 10012, 212/475-7799, M–F 10–7, Sat–Sun 11–7, through March 23.

## NEW YORK CITY: CHELSEA

**Nir Arieli** “Inframen,” Daniel Cooney Fine Art, 508 W. 26th St., #9C, NY, NY 10001, 212/255-8158, [www.danielcooneyfineart.com](http://www.danielcooneyfineart.com), T–Sat 11–6, through March 8. Gallery talk, February 22, 3 PM.

**Arrangements by Marie Cosindas** Silverstein Photography, 535 W. 24th St., NY, NY 10011, 212/627-3930, [www.brucesilverstein.com](http://www.brucesilverstein.com), T–Sat 11–6, through March 8.

**Lawrence Beck** “Italian Pictures,” Sonnabend, 536 W. 22nd St., NY, NY 10011, 212/627-1018, [www.sonnabendgallery.com](http://www.sonnabendgallery.com), T–Sat 11–6, through March 15.

**Nancy Burson** “Composites,” Clamp Art, 531 W. 25th St., Ground Fl., NY, NY 10001, 646/230-0020, [www.clampart.com](http://www.clampart.com), T–Sat 11–6 February 20 – March 29.

**Wijnanda Deroo** “Rijksmuseum,” Robert Mann Gallery, 525 W. 26th St., NY, NY 10001, 212/989-7600, [www.robertmann.com](http://www.robertmann.com), T–Sat 11–6, through March 29.

**Ashley Gilbertson** “Dangerous Ground,” VII Photo Agency at The Half King, 505 West 23rd Street, NY, NY 10011, 212/462-4300, [curphoto.tumblr.com](http://curphoto.tumblr.com), through March 11.

**David Goldes** Yossi Milo Gallery, 245 Tenth Ave., NY, NY 10001, 212/414-0370, [www.yossimilo.com](http://www.yossimilo.com), T–Sat 10–6, through March 8.

**Hisaji Hara** “After Balthus,” Danziger Projects, 527 W. 23rd St., NY, NY 10011, 212/629-6778, [www.danzigerprojects.com](http://www.danzigerprojects.com), T–F 11–6, Sat 12–6, through March 22.

**Kenyatta A.C. Hinkle** “Say It Isn’t So,” Jenkins Johnson Gallery, 521 W. 26th St., 5th fl., NY, NY 10001, 212/629-0707, [www.jenkinsjohnsongallery.com](http://www.jenkinsjohnsongallery.com), T–Sat 12–6, February 20 – April 5.

**Susan Hockaday** “After Nature,” Soho20 Chelsea Gallery, 547 W. 27th St., Ste. 301, NY, NY 10001, 212/367-8994, [www.soho20gallery.com](http://www.soho20gallery.com), T–Sat 12–6, through February 22.

**Imprints** Leslie Tonkonow Artworks + Projects, 535 W. 22nd St., 6th fl., NY, NY 10011, 212/255-8450, [www.tonkonow.com](http://www.tonkonow.com), T–Sat 10–6, through March 15.

**Kate Joyce/Jakub Karwowski/Jow Maloney/Cheryle St. Onge/Joni Sternback** “Not Long Hidden,” Rick Wester Fine Art, 526 W. 26th St., Ste. 417, NY, NY 10001, 212/255-5560, [www.rickwesterfineart.com](http://www.rickwesterfineart.com), through March 1.

**Sarah Kaufman** “Homebody,” Porter Contemporary, 548 W. 28th St., 3rd fl., NY, NY 10001, 212/696-7432, [www.portercontemporary.com](http://www.portercontemporary.com), W 11–6, Th 11–8, F–Sat 11–6, through February 22.

**David LaChapelle** “Land *Scope*,” Paul Kasmin Gallery, 515 W. 27th St., NY, NY 10001, 212/563-4474, [www.paulkasmingallery.com](http://www.paulkasmingallery.com), T–Sat 10–6, through March 1.

**Maroesjka Lavigne** “Island,” Robert Mann Gallery, 525 W. 26th St., NY, NY 10001, 212/989-7600, [www.robertmann.com](http://www.robertmann.com), T–Sat 11–6, April 3 – May 17.

**Naomi Leshem** “Centered,” Andrea Meislin Gallery, 534 W. 24th St., NY, NY 10001, 212/627-2552, [www.andreameislin.com](http://www.andreameislin.com), T–Sat 10–6, through February 22.

**Jerome Liebling** “Matter of Life and Death,” Steven Kasher Gallery 521 W. 23rd St., NY, NY 10011, 212/966-3978, [www.stevengkasher.com](http://www.stevengkasher.com), T–Sat 11–6, March 13 – April 19. Reception, Thursday, March 13, 6–8 PM.

**Michel Majerus** Matthew Marks Gallery, 526 W. 22 St., NY, NY 10011, 212/243-0200, [www.matthewmarks.com](http://www.matthewmarks.com), T–Sat 11–6, through April 19.

**Tanya Marcuse** “Fallen,” Julie Saul Gallery, 535 W. 22nd St., NY, NY 10011, 212/627-2410, [www.saulgallery.com](http://www.saulgallery.com), T–Sat 11–6 and by appt., through February 22.

**Fred W. McDarrah** “Save the Village,” Steven Kasher Gallery 521 W. 23rd St., NY, NY 10011, 212/966-3978, [www.stevengkasher.com](http://www.stevengkasher.com), T–Sat 11–6, through March 8.

**Christine Meisner** “Disquieting Nature,” Walther Collection, 526 W. 26th St., Ste. 718, NY, NY 10001, 212/352-0683, [www.walthercollection.com](http://www.walthercollection.com), Th–Sat 12–6, February 28 – May 24.

**Andrew Moore** “Dirt Meridian,” Yancey Richardson Gallery, 535 W. 22nd St., NY, NY 10011, 646/230-9610, [www.yanceyrichardson.com](http://www.yanceyrichardson.com), T–Sat 10–6, through February 22.

**Richard Mosse** Jack Shainman Gallery, 513 W. 20th St., NY, NY 10011, 212/645-1701, [www.jackshainman.com](http://www.jackshainman.com), M–F 10–6, February 22 – March 22.

**Shirin Neshat** “Our House is On Fire,” Robert Rauschenberg Foundation Project Space, 455 W. 19th St. NY, NY 10011, 212/228-5283, [www.rauschenbergfoundation.org](http://www.rauschenbergfoundation.org), Tue–Sat, 11–6, through March 1.

**Photography 2014** New Century Artists, 530 W. 25th St., Ste. 406, NY, NY 10001, 212/367-7072, [www.newcenturyartists.org](http://www.newcenturyartists.org), T–Sat 11–6, through March 4.

**Matthew Pillsbury** “City Stages,” Aperture Gallery, 547 W. 27th St., 4th fl., NY, NY 10001, 212/505-5555, [www.aperture.org](http://www.aperture.org), T–Sat 10–6, February 20 – March 27.

**Alex Prager** “Face in the Crowd,” Lehmann Maupin Gallery, 540 W. 26th St., NY, NY 10001, 212/255-2923, [www.lehmannmaupin.com](http://www.lehmannmaupin.com), T–Sat 10–6, through February 22.

## NEW YORK CITY: CHELSEA continued

**Richard Renaldi** “Touching Strangers,” Aperture Gallery, 547 W. 27th St., 4th fl., NY, NY 10001, 212/505-5555, [www.aperture.org](http://www.aperture.org), T–Sat 10–6, April 3 – May 15.

**Malick Sidibé** Jack Shainman Gallery, 524 West 24th St, NY, NY 10011, 212/337-3372, [www.jackshainman.com](http://www.jackshainman.com), T–Th 10–6, March 27 – April 26.

**Harvey Stein** “Coney Island/Harlem A Portrait of Two Communities,” Leica Gallery, 670 Broadway, NY, NY 10012, 212/777-3051, [leica-camera.com](http://leica-camera.com), T–F 11–6, Sat 12–6, through February 22.

**The Heart & The Eye: Henri Cartier-Bresson and Robert Frank in the World** Danziger Projects, 527 W. 23rd St., NY, NY 10011, 212/629-6778, [www.danzigerprojects.com](http://www.danzigerprojects.com), T–F 11–6, Sat 12–6, through March 22.

**Carrie Mae Weems** Flomenhaft Gallery, 547 W. 27th St., Ste. 200, NY, NY 10001, 212/268-4952, [www.flomenhaftgallery.com](http://www.flomenhaftgallery.com), T–Sat 10:30–5, through February 22.

**Marc Yankus** “The Space Between,” Clamp Art, 531 W. 25th St., Ground Fl., NY, NY 10001, 646/230-0020, [www.clampart.com](http://www.clampart.com), T–Sat 11–6, April 3 – May 17.

**Sharon Ya’ari** Andrea Meislin Gallery, 534 W. 24th St., NY, NY 10001, 212/627-2552, [www.andreameislin.com](http://www.andreameislin.com), T–Sat 10–6, March 8 – April 26.

**Zoobs** “Consolidate the Experience,” Ivy Brown Gallery, 675 Hudson St., 4th fl., NY, NY 10014, 212/925-1111, [www.ivybrown-gallery.org](http://www.ivybrown-gallery.org), T–Sat 12–6, through February 20.

## NEW YORK CITY: MIDTOWN AND UPTOWN

**A Collective Invention: Photographs at Play** The Morgan Library & Museum, 225 Madison Ave. at 36th St., NY, NY 10016, 212/685-0008, [www.themorgan.org](http://www.themorgan.org), T–Th 10:30–9, F 10:30–6, Sat 10–6, Sun 11–6, through May 18.

**Activist New York** Museum of the City of New York, 1220 Fifth Ave., NY, NY 10029, 212/534-1672, [www.mcny.org](http://www.mcny.org), W–Sat 10–5, Sun 12–5, ongoing.

**Diane Arbus** “Portraits of America,” Gagosian Gallery, 976 Madison Ave., NY, NY 10075, 212/744-2313, [www.gagosian.com](http://www.gagosian.com), T–Sat 10–6, through April 19. Reception, Thursday, March 6, 6–8 PM.



**Christian Marclay:** *Allover (Genesis, Travis Tritt, and others)*, 2008, cyanotype, 51.5"x97.75" (The Museum of Modern Art, New York. Acquired through the generosity of Steven A. and Alexandra M. Cohen. © 2014 Christian Marclay), from “A World of Its Own: Photographic Practices in the Studio” at the Museum of Modern Art, New York

**A World of Its Own: Photographic Practices in the Studio** Museum of Modern Art, 11 W. 53rd St., NY, NY 10019, 212/708-9400, [www.moma.org](http://www.moma.org), Sat–M & W–Th 10:30–5:30, F 10:30–8, through October 5.

**Black & Beautiful** Keith de Lellis Gallery, 1045 Madison Ave. #3, NY, NY 10075, 212/327-1482, [www.keithdelellisgallery.com](http://www.keithdelellisgallery.com), T–Th 11–5, F 11–2, through March 1. A group exhibition of African-American portraits.

**Alexander Borodulin** “New York Underground, 1970s–1980s” Nailya Alexander Gallery, 41 E. 57th St., Ste. 704, NY, NY 10022, 212/315-2211, [www.nailyaalexandergallery.com](http://www.nailyaalexandergallery.com), T–Sat 11–6, through March 8.

**Manuel Alvarez Bravo** “Vintage,” Throckmorton Fine Art, 145 E. 57th St., 3rd fl., NY, NY 10022, 212/223-1059, [www.throckmorton-nyc.com](http://www.throckmorton-nyc.com), T–Sat 10–5, through March 1.

**Harry Callahan** “City,” The Pace/MacGill Gallery, 32 E. 57th St., NY, NY 10022, 212/759-7999, [www.pacemacgill.com](http://www.pacemacgill.com), T–F 9:30–5:30, Sat 10–6, through March 8.

**Capa in Color** The International Center of Photography, 1133 Avenue of the Americas at 43rd St., NY, NY 10036, 212/857-0000, [www.icp.org](http://www.icp.org), T–Th 10–5, F 10–8, Sat–Sun 10–6, through May 4.

**City as Canvas: Graffiti Art from the Martin Wong Collection** Museum of the City of New York, 1220 Fifth Ave., NY, NY 10029, 212/534-1672, [www.mcny.org](http://www.mcny.org), W–Sat 10–5, Sun 12–5, through August 24.

**Darkness & Light: Contemporary Nordic Photography** Scandinavia House, 58 Park Avenue @ 38th St., NY, NY 10016, 212/779-3587, [www.scandinaviahouse.org](http://www.scandinaviahouse.org), T–Sat 12–6, W 12–7, February 22 – April 26. Opening reception, Saturday, February 22, 6–8 PM.

**Jed Devine** “New Color Work,” Bonni Benrubi Gallery, 41 E. 57th St., NY, NY 10022, 212/888-6007, [www.bonnibenrubi.com](http://www.bonnibenrubi.com), T–Sat 10–6, through April 12.

**Isa Genzken** “Retrospective,” Museum of Modern Art, 11 W. 53rd St., NY, NY 10019, 212/708-9400, [www.moma.org](http://www.moma.org), Sat–M & W–Th 10:30–5:30, F 10:30–8, through March 10. Includes photography.

**Robert Heinecken** Museum of Modern Art, 11 W. 53rd St., NY, NY 10019, 212/708-9400, [www.moma.org](http://www.moma.org), Sat–M & W–Th 10:30–5:30, F 10:30–8, March 15 – September 7.

**Ink Art: Past as Present in Contemporary China** Metropolitan Museum of Art, 1000 Fifth Ave., NY, NY 10028, 212/535-7710, [www.metmuseum.org](http://www.metmuseum.org), Sun & T–Th 9:30–5:30, F–Sat 9:30–9, through April 6.

**Invitational Exhibition of Visual Arts** American Academy of Arts and Letters, 633 W. 155th St., NY, NY 10032, 212/368-5900, [www.artsandletters.org](http://www.artsandletters.org), T–Sun 1–4, March 7 – April 14.

**Italian Futurism, 1909–1944: Reconstructing the Universe** Solomon R. Guggenheim Museum, 1071 Fifth Ave., NY, NY 10128, 212/423-3500, [www.guggenheim.org](http://www.guggenheim.org), F–W 10–5:45, Sat 10–7:45, February 21 – September 1.

**Ladies and Gentlemen... The Beatles** The New York Public Library for the Performing Arts, Dorothy and Lewis B. Cullman Center, 40 Lincoln Center Plaza, NY, NY 10023, 212/642-0142, [www.nypl.org/locations/lpa](http://www.nypl.org/locations/lpa), T–W 12–6, Th 12–8, Sat 12–6, through May 10.

**Charles Marville** “Photographer of Paris,” Metropolitan Museum of Art, 1000 Fifth Ave., NY, NY 10028, 212/535-7710, [www.metmuseum.org](http://www.metmuseum.org), Sun & T–Th 9:30–5:30, F–Sat 9:30–9, through May 4.

**Herbert Matter** Gitterman Gallery, 41 E. 57th St., Ste. 1103, NY, NY 10022, 212/734-0868, [www.gittermangallery.com](http://www.gittermangallery.com), T–Sat 10–6, through March 22.

## NEW YORK CITY: MIDTOWN AND UPTOWN *continued*

**Gary Metz** “Quaking Aspen” A Lyric Complaint,” Ildiko Butler Gallery, 113 W. 60th St., Rm. 423, NY, NY 10023, 212/636-6073, [www.ildikobutlergallery.com](http://www.ildikobutlergallery.com), 9–9 daily, through March 20.

**Mid-Century: Postwar Italian Photography** Keith de Lellis Gallery, 1045 Madison Ave. #3, NY, NY 10075, 212/327-1482, [www.keithdelellisgallery.com](http://www.keithdelellisgallery.com), T–Th 11–5, F 11–2, March 20 – April 26.

**Moving Walls** Open Society Foundations, 224 W. 57th St., NY, NY 10016, 212/548-0600, [www.opensocietyfoundations.org](http://www.opensocietyfoundations.org), M–F 10–4, through October 3.

**My Forest /Our Future** Gabarron Foundation, Carriage House Center for the Arts, 149 E. 38th St., NY, NY 10016, 212/573-6968, [www.gabarronfoundation.org](http://www.gabarronfoundation.org), M–F 9–5, through February 28.

**Irina Nakhova** “Moscow Diary,” Nailya Alexander Gallery, 41 E. 57th St., Ste. 704, NY, NY 10022, 212/315-2211, [www.nailyaalexandergallery.com](http://www.nailyaalexandergallery.com), T–Sat 11–6, April 2 – May 17.

**Picturing Science: Museum Scientists and Imaging Technology** American Museum of Natural History, Central Park West at 79th St., NY, NY 10024, 212/769-5000, [www.amnh.org](http://www.amnh.org), daily 10–5:45, through Spring 2014.

**Pioneering Poet of Light: Photographer Florence Vandamm & the Vandamm Studio** The New York Public Library for the Performing Arts, Dorothy and Lewis B. Cullman Center, 40 Lincoln Center Plaza, NY, NY 10023, 212/642-0142, [www.nypl.org/locations/lpa](http://www.nypl.org/locations/lpa), T–W 12–6, Th 12–8, Sat 12–6, through February 28.

**Proof: The Intersection of Science, Art and Photography, 1850s–2013** L. Parker Stephenson Photographs, 764 Madison Ave., NY, NY 10065, 212/517-8700, [www.lparkerstephenson.com](http://www.lparkerstephenson.com), W–Sat 11–6, call gallery for exact dates.

**Rising Waters: Photographs of Hurricane Sandy** Museum of the City of New York, 1220 Fifth Ave., NY, NY 10029, 212/534-1672, [www.mcnyc.org](http://www.mcnyc.org), W–Sat 10–5, Sun 12–5, through March 2.

**Herb Ritts** “Supermodel: Stephanie, Cindy, Christy, Tatjana, Naomi,” Edwynn Houk Gallery, 745 Fifth Ave., 4th fl., NY, NY 10151, 212/750-7070, [www.houkgallery.com](http://www.houkgallery.com), T–Sat 11–6, February 20 – March 22.

**Brea Souders** The Camera Club of New York, The Arts Bldg., 336 W. 37th St., Ste. 206, NY, NY 10018, 212/260-9927, [www.camerclubny.org](http://www.camerclubny.org), M–Sat 12–6, February 20 – March 15.

**Edward Steichen in the 1920s and 30s: A Recent Acquisition** The Whitney Museum of American Art, 945 Madison Ave. at 75th St., NY, NY 10021, 212/570-3676, [www.whitney.org](http://www.whitney.org), W–Th & Sat–Sun 11–6, F 1–9, through February 23.

**Stories in the Social Landscape** Rita K. Hillman Education Gallery at the School of the International Center of Photography, 1114 Avenue of the Americas at 43rd St., NY, NY 10036, 212/857-0001, daily 10–6, through March 16. ICP faculty exhibition.

**The Image Gallery: Redux 1959–1962** Howard Greenberg Gallery, 41 E. 57th St., NY, NY 10022, 212/334-0010, [www.howardgreenberg.com](http://www.howardgreenberg.com), T–Sat 10–6, through February 22.

**The Shadows Took Shape** Studio Museum in Harlem, 144 W. 125th St., NY, NY 10027, 212/864-4500, [www.studiomuseum.org](http://www.studiomuseum.org), through March 9.

**The Tall Tale: Folk, Fantasy & Fear in the Art of the Fairy Tales** Susan Eley Fine Art, 46 W. 90th St., 2nd fl., NY, NY 10024, 917/952-7641, [www.susaneleyfineart.com](http://www.susaneleyfineart.com), T–Th 11–5, Sat 11–3, and by appt., through February 28.

**Frank Thiel** “Nowhere is a Place,” Sean Kelly Gallery, 475 10th Ave., NY, NY 10018, 212/239-1181, [www.skny.com](http://www.skny.com), T–F 11–6, Sat 10–6, through March 22.

**Thirty Years: Thirty-One Photographers** Laurence Miller Gallery, 20 W. 57th St., NY, NY 10019, 212/397-3930, [www.laurenцемillergallery.com](http://www.laurenцемillergallery.com), W–Sat 11–5:30, through April 26.

**2014 Whitney Biennial** The Whitney Museum of American Art, 945 Madison Ave. at 75th St., NY, NY 10021, 212/570-3676, [www.whitney.org](http://www.whitney.org), W–Sun 11–6, F 1–9, March 7 – May 25.

**Thomas Struth** Marian Goodman Gallery, 24 W. 57th St., NY, NY 10019, 212/977-7160, [www.mariangoodman.com](http://www.mariangoodman.com), T–Sat 10–6, through February 28.

**Jeff Wall** Marian Goodman Gallery, 24 W. 57th St., NY, NY 10019, 212/977-7160, [www.mariangoodman.com](http://www.mariangoodman.com), T–Sat 10–6, March 6 – April 12.

**Carrie Mae Weems** “Three Decades of Photography and Video,” Solomon R. Guggenheim Museum, 1071 Fifth Ave., NY, NY 10128, 212/423-3840, [www.guggenheim.org](http://www.guggenheim.org), Sun–W 9–6, F–Sat 9–8, through May 14.

**What is a Photograph?** The International Center of Photography, 1133 Avenue of the Americas at 43rd St., NY, NY 10036, 212/857-0000, [www.icp.org](http://www.icp.org), T–Th 10–5, F 10–8, Sat–Sun 10–6, through May 4.

**Within the Light Trap: Cruz-Diez in Black and White** Americas Society, 680 Park Ave., NY, NY 10021, 212/249-8950, [www.as-coa.org](http://www.as-coa.org), T–Sun 12–6, through March 22.

## NEW YORK CITY: BROOKLYN

**Global Awareness** powerHouse Arena, 37 Main St., Brooklyn, NY 11201, 718/666-3049, [www.powerhousearena.com](http://www.powerhousearena.com), M–F 10–7, Sat–Sun 11–7, February 27 – March 20. Exhibition of Social Documentary.net’s Call for Entries Winners.

**Dave Jordano** “Detroit: Unbroken Down,” United Photo Industries HQ, 111 Front St., Ste. 204, DUMBO, Brooklyn, NY 11201, [www.unitedphotoindustries.com](http://www.unitedphotoindustries.com), M–F 12–6, through March 21.

**Paula McCartney** “A Field Guide to Snow and Ice,” Klompching Gallery, 111 Front St., Ste. 206, Brooklyn, NY 11201, 212/796-2070, [www.klompching.com](http://www.klompching.com), W–Sat 11–6 and by appt., through February 15.

**Mónika Sziládi** “Wide Receivers & Tight Ends,” Smack Mellon Gallery, 92 Plymouth St., Brooklyn, NY 11201, 718/834-8761, [www.smackmellon.org](http://www.smackmellon.org), W–Sun 12–6, through March 2.

## NEW YORK CITY: BRONX

**Bridging the Gap: Photographs by Gordon Parks and Toni Parks** Gordon Parks Gallery, John Cardinal O’Connor Campus, The College of New Rochelle, 332 E. 149th St., #3, Bronx, NY 10451, 718/665-1310, [www.cnr.edu](http://www.cnr.edu), F 2–6, Sat 1–5, and by appt., through May 2.

**Close: The Photography of Allan Pollok-Morris** New York Botanical Garden, 2900 Southern Blvd., Bronx, NY 10458, 718/817-8700, [www.nybg.org](http://www.nybg.org), T–Sun 10–6, through March 16.

**Jessica Dimmock/Stephanie Sinclair** “Too Young to Wed,” Bronx Documentary Center, 614 Courtland Ave., 10451, 347/332-6962, [www.bronxdoc.org](http://www.bronxdoc.org), by appt., through March 16.

**The Beauty of Paradise: A Photographic Journey** New York Botanical Garden, 2900 Southern Blvd., Bronx, NY 10458, 718/817-8700, [www.nybg.org](http://www.nybg.org), T–Sun 10–6, through February 23.



## NEW YORK CITY: QUEENS

### NEW YORK CITY: QUEENS

**Raising the Temperature: Art in Environmental Reactions** Queens Museum of Art, NYC Building, Flushing Meadows, Corona Park, Flushing, NY 11368, 718/592-9700, [www.queensmuseum.org](http://www.queensmuseum.org), T–F 10–5, Sat–Sun 12–5, through March 2.

**Accra Shepp** “The Islands of New York,” Queens Museum of Art, NYC Building, Flushing Meadows, Corona Park, Flushing, NY 11368, 718/592-9700, [www.queensmuseum.org](http://www.queensmuseum.org), T–F 10–5, Sat–Sun 12–5, through May 11.

### NEW YORK CITY: STATEN ISLAND

**Invisible Migrations** Alice Austen House Museum, 2 Hylan Blvd., Staten Island, NY 10305, 718/816-4506, [www.aliceausten.org](http://www.aliceausten.org), Th–Sun 12–5, March 4 – August 31. Reception, Sunday March 16, 3–5 PM.

### BEYOND NEW YORK CITY

**Body Conscious** Amelie A. Wallace Gallery, Campus Center, Main Level, SUNY College at Old Westbury, Rte. 107, Old Westbury, NY 11568, 516/876-3056, [www.oldwestbury.edu](http://www.oldwestbury.edu), M–Th 12–5, and by appt., through April 10.

**Garden Party** Nassau County Museum of Art, One Museum Dr., Roslyn Harbor, NY 11576, 516/484-9337, [www.nassauuseum.org](http://www.nassauuseum.org), T–Sun 11–4:45, March 8 – July 6. Includes photography.

**Rob Goldman** “I Matter,” Northport Public Library, 151 Laurel Ave., Northport, NY 11768, 631/261-6930, [www.nenpl.org/index.php](http://www.nenpl.org/index.php), M–F 9–9, Sat 9–5, Sun 1–5, through March.

**Marzena Grabczynska** Alfred Van Loen Gallery, South Huntington Library, 145 Pigeon Hill Rd, Huntington Station, NY 11746, 631/549-4411, [www.shpl.info](http://www.shpl.info), M–T, Th–F 9–9, W 10–9, Sat 9–5, Sun 1–5, through March 5. Featuring photos from Cuba.

**Legacy** Fisher Landau Center, 38-27 30th St., Long Island City, NY 11101, 718/937-0727, [www.flcart.org](http://www.flcart.org) Th–M 12–5, through March 31. Photographs from Emily Fisher Landau’s gift to the Whitney Museum of Art.

**Thaw** Dorsky Gallery, 11-03 45th Ave., Long Island City, NY 11101, [www.dorsky.org](http://www.dorsky.org), 718/937-6317, M–F 10–5, through April 16.

**Paolo Tosti** “Exodus,” Fotofoto Gallery, 14 W. Carver St., Huntington, NY 11743, 631/549-0448, [www.fotofotogallery.org](http://www.fotofotogallery.org), F 5–8, Sat 12–8, Sun 12–4, through February 23.

**Paolo Tosti** Solarium Gallery, The Knox School, Houghton Hall, 541 Long Beach Rd., St. James, NY 11780, through February 28.

**Lois Youmans/Thom O’Connor/Barry Feuerstein** Fotofoto Gallery, 14 W. Carver St., Huntington, NY 11743, 631/549-0448, [www.fotofotogallery.org](http://www.fotofotogallery.org), F 5–8, Sat 12–8, Sun 12–4, February 28 – March 30. Reception Saturday, March 1, 7–9 PM.

### WOODSTOCK AREA

**Tabla Rasa** The Center for Photography at Woodstock, 59 Tinker St., Woodstock, NY 12498, 845/679-9957, [www.cpw.org](http://www.cpw.org), W–Sun 12–5, through March 30. Includes work by Anouk Kruit-hof, Sara Skorgen Tiegen, and Sonja Thompsen.

**Sara Macel** “May the Road Rise to Meet You,” The Center for Photography at Woodstock, 59 Tinker St., Woodstock, NY 12498, 845/679-9957, [www.cpw.org](http://www.cpw.org), W–Sun 12–5, through March 30.

### UPSTATE NEW YORK

**Ansel Adams: Early Works** The Hyde Collection, 161 Warren St., Glens Falls, NY 12801, 518/792-1761, [www.hydecollection.org](http://www.hydecollection.org), T–Sat 10–5, Sun 12–5, through April 20.

**A World Apart: Hasidic Communities in Israel** George Eastman House, 900 East Ave., Rochester, NY 14607, 585/271-3361, [www.eastmanhouse.org](http://www.eastmanhouse.org), T–Sat 10–5, Th 10–8, Sun 1–5, February 22 – May 25.

**Big Orbit Members’ Exhibition** CEPA Gallery, 617 Main St., Buffalo, NY 14203, 716/856-2717, [www.cepagallery.org](http://www.cepagallery.org), M–F 9–5, Sat 12–4, through March 15.

**Lisa Bradley/Bruno Chalifour/Carl Chiarenza/David W. Haas** “Makers & Mentors,” The Rochester Contemporary Art Center, 137 East Ave., Rochester, NY 14604, 585/461-2222, [www.rochestercontemporary.org](http://www.rochestercontemporary.org), W–Sun 1–5, F 1–10, through March 16.

**Michael Bühler-Rose** “New Geographics,” Light Work, Robert B. Menschel Media Center, 316 Waverly Ave., Syracuse, NY 13244, 315/443-1300, [www.lightwork.org](http://www.lightwork.org), Sun–F 10–6 and by appt., March 17 – May 30, 2014.

**Derek Farkas/Eric Mitchell** CEPA Gallery, 617 Main St., Buffalo, NY 14203, 716/856-2717, [www.cepagallery.org](http://www.cepagallery.org), M–F 9–5, Sat 12–4, through March 15.

**Jason Houston** “Conservation Journal,” Fovea Exhibitions, 143 Main St., Beacon, NY 12508, 845/765-2199, [www.foveaeditions.org](http://www.foveaeditions.org), F–Sun 12–6, through April 6.

**In Context: The Portrait in Contemporary Photographic Practice** Ruth and Elmer Wellin Museum of Art, Hamilton College, 198 College Hill Rd., Clinton, NY 13323, 315/859-4396, [www.hamilton.edu/wellin](http://www.hamilton.edu/wellin), T–F 11–5:30, Sat 10–5, Sun 12–5, through July 27.

**Judy Linn** Esther Massry Gallery, The College of Saint Rose, 1002 Madison Ave., Albany NY 12203, 518/337-2390, [www.strose.edu/gallery](http://www.strose.edu/gallery), M–F 12–5, Sun 12–4 and by appt., through February 28.

**Aspen Mays** “Works,” Light Work, Robert B. Menschel Media Center, 316 Waverly Ave., Syracuse, NY 13244, 315/443-1300, [www.lightwork.org](http://www.lightwork.org), Sun–F 10–6 and by appt., through March 7.

**Photographs Re-Imagined** Spectrum Gallery, Lumiere Photo, 100 College Ave., Rochester, NY 14607, 585/461-4447, [www.lumierephoto.com](http://www.lumierephoto.com), T & Th 9–8, W & F 9–6, Sat 10–2, through March 28.



**Pranlal Patel:** *Selling Ghee, Gate of the Shree Swaminarayan Temple, Kalupur, Ahmedabad, 1937*, inkjet print (courtesy of the artist, © Pranlal Patel) at the Wellin Museum of Art, Hamilton College, Clinton, NY

## UPSTATE NEW YORK *continued*

**Photography Takes Over 2014** Upstream Gallery, 8 Main St., Hastings-on-Hudson, NY 10706, 914/674-8548, [www.upstream-gallery.com](http://www.upstream-gallery.com), Th–Sun 12:30–5:30, through February 23.

**Refocusing the Lens: Pranal Patel's Photographs of Women at Work in Ahmedabad** Ruth and Elmer Wellin Museum of Art, Hamilton College, 198 College Hill Rd., Clinton, NY 13323, 315/859-4396, [www.hamilton.edu/wellin](http://www.hamilton.edu/wellin), T–F 11–5:30, Sat 10–5, Sun 12–5, through April 15.

**Joseph Squillante** “A Closer Look: The Hudson River,” The Beacon Institute, 199 Main St., Beacon, NY 12508, 845/383-1600, M–F 9–5, Sat 11–5, through March 2.

**2014 Transmedia Photography Annual** Light Work, Robert B. Menschel Media Center, 316 Waverly Ave., Syracuse, NY 13244, 315/443-1300, [www.lightwork.org](http://www.lightwork.org), Sun–F 10–6 and by appt., through May 30.

**Robert Weingarten** “Another America: A Testimonial to the Amish,” George Eastman House, 900 East Ave., Rochester, NY 14607, 585/271-3361, [www.eastmanhouse.org](http://www.eastmanhouse.org), T–Sat 10–5, Th 10–8, Sun 1–5, February 22 – May 25.

**William Wegman** “Flo/Flow (2011),” Everson Museum of Art, 401 Harrison St., Syracuse, NY 13202, 315/474-6064, [www.everson.org/museum](http://www.everson.org/museum), W–F & Sun 12–5, Sat 10–5, March 1 – May 27.

**Dan Wetmore** “Golden Dawn,” Light Work, Robert B. Menschel Media Center, 316 Waverly Ave., Syracuse, NY 13244, 315/443-1300, [www.lightwork.org](http://www.lightwork.org), Sun–F 10–6 and by appt., March 17 – May 30, 2014.

**Pavel Wolberg** George Eastman House, 900 East Ave., Rochester, NY 14607, 585/271-3361, [www.eastmanhouse.org](http://www.eastmanhouse.org), T–Sat 10–5, Th 10–8, Sun 1–5, February 22 – May 25.

## NEW JERSEY

**A Gallery 14 Sampler** The Chauncey Center Gallery at Educational Testing Center, 660 Rosedale Rd., Princeton, NJ 08541, 609/921-3600, through March 17. Work by nine highly accomplished NJ photographers.

**Artists' Portraits: Putting a Face to the Name** Jane Voorhees Zimmerli Art Museum, Rutgers State University, 71 Hamilton St., New Brunswick, NJ 08901, 732/932-7237, [www.zimmerlimuseum.rutgers.edu](http://www.zimmerlimuseum.rutgers.edu), T–F 10–4:30, Sat–Sun 12–5, through April 6.

**Miek Boltjes** “Street Art Portrait(s),” Gallery 14, 14 Mercer St., Hopewell, NJ 08525, 609/333-8511, [www.photogallery14.com](http://www.photogallery14.com), Sat–Sun 12–5, March 14 – April 13. Reception, Friday, March 14, 6–8 PM. Meet the Artists, Sunday, March 16, 1–3 PM.

**Diane Burko** “Glacial Perspectives,” Jane Voorhees Zimmerli Art Museum, Rutgers State University, 71 Hamilton St., New Brunswick, NJ 08901, 732/932-7237, [www.zimmerlimuseum.rutgers.edu](http://www.zimmerlimuseum.rutgers.edu), T–F 10–4:30, Sat–Sun 12–5, through July 31.

**Mark Fields/Forrest Old: There and Back** Red Filter Gallery, 74 Bridge St., Lambertville, NJ 08534, 347/244-9758, [www.redfiltergallery.com](http://www.redfiltergallery.com), F–Sun 12–5, March 15 – May 4.

**Paul Grecian and Michael Schweigart** “Down East,” Artists' Gallery, 18 Bridge St., Lambertville, NJ 08530, 609/397-4588, [www.lambertvillearts.com](http://www.lambertvillearts.com), F–Sat, Sun 11–6, April 10 – May 4.

**Inspired** The Markeim Art Center, 104 Walnut St., Haddonfield, NJ 08033, 856/429-8585, [www.markeimartcenter.org](http://www.markeimartcenter.org), T–F 10–2:30, Sat 1–3, through March 2.

## Red Filter Gallery *presents...*

### Fields & Old *There and Back*



March 15 - May 4



Red Filter  
Fine Art Photography  
Gallery  
[www.redfiltergallery.com](http://www.redfiltergallery.com)

74 Bridge Street  
Lambertville, NJ  
347-244-9758

**Rhoda Kassov-Isaac** “Autumn's Beauties,” Gallery 14, 14 Mercer St., Hopewell, NJ 08525, 609/333-8511, [www.photogallery14.com](http://www.photogallery14.com), Sat–Sun 12–5, March 14 – April 13. Reception, Friday, March 14, 6–8 PM. Meet the Artists, Sunday, March 16, 1–3 PM.

**Brian Lav** “Down South,” Upstairs Gallery, Red Filter Gallery, 74 Bridge St., Lambertville, NJ 08534, 347/244-9758, [www.redfiltergallery.com](http://www.redfiltergallery.com), F–Sun 12–5, through March 16.

**Tina Link** Harrison Public Library, 2 Bruce Ave., Harrison, NY 10528, 914/835-0324, [www.harrisonpl.org](http://www.harrisonpl.org), M & W 9:30–9, Th, F–Sat 9:30–5:30, Sun 1–5, through February 25.

**Man Made** Atrium Art Gallery, Performing Arts Center of Sussex County Community College, One College Hill Rd., Newton, NJ 07860, 973/300-2100, M–Th 8–9, F 9–6, through March 9. Work by the New Jersey Photography Forum.

**Meiji Photographs: A Historic Friendship between Japan and Rutgers** Jane Voorhees Zimmerli Art Museum, Rutgers State University, 71 Hamilton St., New Brunswick, NJ 08901, 732/932-7237, [www.zimmerlimuseum.rutgers.edu](http://www.zimmerlimuseum.rutgers.edu), T–F 10–4:30, Sat–Sun 12–5, through July 31.

**Kevin J. Miyazaki/Jon Yamashiro** Art Gallery, The Richard Stockton College of New Jersey, 101 Vera King Farris Dr., Galloway, NJ 08205, 609/652-4214, M–Sat 12–7:30, Sun 12–4, through March 23. “Camp Home” by Miyazaki, “WWII Japanese Internment Camps” by Yamashiro.

## NEW JERSEY continued

**Larry Parsons** “...round Rodin,” Gallery 14, 14 Mercer St., Hopewell, NJ 08525, 609/333-8511, [www.photogallery14.com](http://www.photogallery14.com), Sat–Sun 12–5, through March 9.

**Photography 33** Perkins Center for the Arts, 395 Kings Hwy., Moorestown, NJ 08057, 856/235-6488 or 800/387-5226, [www.perkinscenter.org](http://www.perkinscenter.org), Th–F 10–4, Sat–Sun 12–4, through March 29.

**Photography as Painting** The Center for Contemporary Art, 2020 Burnt Mills Rd., Bedminster, NJ 07920, 908/234-2345, [www.ccabedminster.org](http://www.ccabedminster.org), M–F 9–3, through February 22.

**Photo-Secession: Painterly Masterworks of Turn-of-the-Century Photography** The Hyde Collection, 161 Warren St., Glens Falls, NY 12801, 518/792-1761, [www.hydecollection.org](http://www.hydecollection.org), T–Sat 10–5, Sun 12–5, through April 20.

**Princeton Photography Club** “Generations,” Lakefront Gallery, Robert Wood Johnson university Hospital Hamilton, 1 Hamilton Health Place, Hamilton, NJ 08690, 609/802-8924, March 13 – June 13.

**Roberto Quezada-Darden** “What Happens When We Die,” Red Filter Gallery, 74 Bridge St., Lambertville, NJ 08534, 347/244-9758, [www.redfiltergallery.com](http://www.redfiltergallery.com), F– Sun 12–5, through March 16.

**Martin Schwartz** “Figure Studies 1,” Gallery 14, 14 Mercer St., Hopewell, NJ 08525, 609/333-8511, [www.photogallery14.com](http://www.photogallery14.com), Sat–Sun 12–5, through March 9.

**35th Annual Juried Art Exhibition** Monmouth Museum, 765 Newman Springs Rd., Lincroft, NJ 07738, 732/747-2266, [www.monmouthmuseum.org](http://www.monmouthmuseum.org), T–Sat 10–5, Sun 12–5, through March 9.

**Windows on the World** Overlook Hospital Main Gallery, 99 Beauvoir Ave., Summit, NJ 07960, 908/522-2000, M–F 8–4:30, through April 11. A presentation of the New Jersey Photography Forum.

## DELAWARE

**Scott Heiser** “Fashion, Circus, Spectacle,” Delaware Art Museum, 2301 Kentmere Pkwy., Wilmington, DE 19806, 302/571-9590, [www.delart.org](http://www.delart.org), T, Th, F & Sat 10–4, W 10–8, Sun noon–4, March 8 – June 1.

## MARYLAND

**American Photography X2** Center for the Arts Gallery, Towson University, 8000 York Rd., Towson, MD 21252, 410/704-2808, [www.towson.edu/artscalendar](http://www.towson.edu/artscalendar), T–Sat 11–4, through April 5.

**Zhao Jing** C. Grimaldis Gallery, 523 N. Charles St., Baltimore, MD 21201, 410/539-1080, [www.cgrimaldisgallery.com](http://www.cgrimaldisgallery.com), T–Sat 10–5:30, March 12 – April 12.

**An-My Lê** The Baltimore Museum of Art, 10 Art Museum Dr., Baltimore, MD 21218, 410/396-6314, [www.artbma.org](http://www.artbma.org), W–F 11–5, Sat–Sun 11–6, through February 23.

**Visibility Machines: Harun Farocki and Trevor Paglen** Center for Art, Design and Visual Culture, UMBC, 1000 Hilltop Circle Fine Arts Bldg., 105 Baltimore, MD 21250, 410/455-3188, [www.umbc.edu/cadvc](http://www.umbc.edu/cadvc), T–Sat 10–5, through February 22.

## WASHINGTON, DC, AREA

**A Day Like No Other: Commemorating the 50th Anniversary of the March on Washington** The Library of Congress, Graphic Arts Galleries, Ground Level, Thomas Jefferson Building, 10 First St., S.E., Washington, DC 20540, 202/707-8000, [www.myloc.gov/exhibitions](http://www.myloc.gov/exhibitions), M–Sat 10–5, through March 1.

**Africa Re-Viewed: The Photographic Legacy of Eliot Elisofon** The National Museum of African Art, 950 Independence Ave., SW, Washington, DC, 202/357-4860, [www.africa.si.edu](http://www.africa.si.edu), daily 10–5:30, through August 24.



**John Brown:** *Acacia Tree*, from *The Africa Series*, 2014, at Cross Mackenzie Gallery, Washington, DC

## WASHINGTON, DC, AREA continued

**American Cool** National Portrait Gallery, Eighth & F Sts., NW, Washington, DC 20001, 202/633-1000, [www.npg.si.edu](http://www.npg.si.edu), daily 11:30–7, through May 31.

**Chris Anthony** “Venice,” Randall Scott Projects, 1326 H St., NE, 2nd fl., Washington, DC 20002, 202/396-0300, [www.randallscottprojects.com](http://www.randallscottprojects.com), W–Sat 12–6, through February 22.

**Art on Paper** Maryland Federation of Art, MFA Circle Gallery, 18 State Circle, Annapolis, MD 21404, 410/268-4566, [www.mdfedart.com](http://www.mdfedart.com), T–Sat 11–5, March 20 – April 20.

**Sharon Beals** “Nests,” National Academy of Sciences Upstairs Gallery, 2101 Constitution Ave., NW, Washington, DC 20001, 202/334-2415, M–F 9–5, through May 2.

**Beyond Bollywood: Indian Americans Shape the Nation** Smithsonian National Museum of Natural History, 10th & Constitution Ave., NW, Washington, DC 20560, 202/633-1000, [www.mnh.si.edu](http://www.mnh.si.edu), daily 10–5:30, February 27 – February 2015.

**Bound for Freedom’s Light: African Americans and the Civil War** National Portrait Gallery, Eighth & F Sts., NW, Washington, DC 20001, 202/633-1000, [www.npg.si.edu](http://www.npg.si.edu), daily 11:30–7, through March 2.

**Matthew Brady’s Photographs of Union Generals** National Portrait Gallery, Eighth & F Sts., NW, Washington, DC 20001, 202/633-1000, [www.npg.si.edu](http://www.npg.si.edu), daily 11:30–7, through May 31, 2015.

**John H. Brown Jr.:** “Out of Africa” Cross Mackenzie Gallery, 2026 R Street NW, Washington, DC 20009, 202/333-7970, [www.crossmackenzie.com](http://www.crossmackenzie.com), March 7 – April 9. New photographs of the Broad Canopies.

**Dancing the Dream** National Portrait Gallery, Eighth & F Sts., NW, Washington, DC 20001, 202/633-1000, [www.npg.si.edu](http://www.npg.si.edu), daily 11:30–7, through July 13, 2014. Images of performers like Fred Astaire and Ginger Rogers, Michael Jackson, Savion Glover, George Balanchine, Mikhail Baryshnikov, Beyoncé, Isadora Duncan, Agnes de Mille, and Lady Gaga.

**Frank Day** Cafritz Foundation Art Center, School of Art + Design at Montgomery College, Takoma Park/Silver Spring Campus, Montgomery College, 930 King St., Tacoma Park, MD 20912, 240/567-5821, [www.montgomerycollege.edu](http://www.montgomerycollege.edu), M–F 8–4, through November 28.

**Maria Friberg** “Between Solitude and Belonging,” Connersmith, 1358 Florida Avenue, NE, Washington, DC 20002, 202/588-8750, [www.connersmith.us.com](http://www.connersmith.us.com), T–Sat 11–5, through December 21.

**In Focus: Ara Güler’s Anatolia** Arthur M. Sackler Gallery, 1050 Independence Ave., SW, Washington, DC 20560, 202/663-1000, [www.asia.si.edu](http://www.asia.si.edu), daily 10–5:30, through May 4.

**Juried Member Show** Multiple Exposures Gallery, 105 North Union St., Studio 312, Torpedo Factory Art Center, Alexandria, VA 22314, 703/683-2205, [www.multipleexposuresgallery.com](http://www.multipleexposuresgallery.com), daily 11–5, through November 24.

**Yousuf Karsh: American Portraits** National Portrait Gallery, Eighth & F Sts., NW, Washington, DC 20001, 202/633-1000, [www.npg.si.edu](http://www.npg.si.edu), daily 11:30–7, through April 27.

**Landscapes In Passing: Photographs by Steve Fitch, Robbert Flick, and Elaine Mayes** Smithsonian American Art Museum, 8th and F Sts., NW, Washington DC 20001, 202/633-1000, [www.americanart.si.edu](http://www.americanart.si.edu), daily 11:30–7, through February 23.

**Made in the USA** The Phillips Collection, 1600 21st St., NW, Washington, DC 20009, 202/387-2151, [www.phillipscollection.org](http://www.phillipscollection.org), T–Sat 10–5, Th 10–8:30, March 1 – August 31.

**Caleb Cain Marcus** “A Portrait of Ice,” National Academy of Sciences Upstairs Gallery, 2101 Constitution Ave., NW, Washington, DC 20001, 202/334-2415, M–F 9–5, through July 7.

**Meade Brothers: Pioneers in American Photography** National Portrait Gallery, Eighth & F Sts., NW, Washington, DC 20001, 202/633-1000, [www.npg.si.edu](http://www.npg.si.edu), daily 11:30–7, through June 1.

**1964: Civil Rights at 50** Newseum, 555 Pennsylvania Ave., NW, Washington, DC 20001, 888/639-7386, [www.newseum.org](http://www.newseum.org), daily 9–5, through 2015.

**One Life: Martin Luther King Jr.** National Portrait Gallery, Eighth & F Sts., NW, Washington, DC 20001, 202/633-1000, [www.npg.si.edu](http://www.npg.si.edu), daily 11:30–7, through June 1.

**Our America: The Latino Presence in American Art** Smithsonian American Art Museum, 8th and F Sts., NW, Washington DC 20001, 202/633-1000, [www.americanart.si.edu](http://www.americanart.si.edu), daily 11–7, through March 2.

**Unintended Bochever Portrait Competition 2013** National Portrait Gallery, Eighth & F Sts., NW, Washington, DC 20001, 202/633-1000, [www.npg.si.edu](http://www.npg.si.edu), daily 11:30–7, through February 23.

**Alex Prager** “Face in the Crowd,” Corcoran Gallery of Art, 500 Seventeenth St., NW, Washington, DC 20006, 202/639-1700, [www.corcoran.org](http://www.corcoran.org), W–M 10–5, Th 10–9, through March 9.

**Select 2014: WPA Art Auction Exhibition** Washington Project for the Arts, 2023 Massachusetts Ave., NW, Washington, DC 20038, 202/234-7103, [www.wpacdc.org](http://www.wpacdc.org), M–F 10–4, February 28 – March 21.

**Susanna Thornton** “Reveries: Selected Works,” 410 GooD-BuddY Art Space, 410 Florida Ave., NW, Washington, DC 20001, through March 2.

**Stephen Twist** “Oculation,” Touchstone Gallery, 901 New York Ave., NW, Washington, DC 20001, 202/347-2787, [www.touchstonegallery.com](http://www.touchstonegallery.com), W–F 11–5, Sat–Sun 12–5, through March 2.

**Unintended Journeys** Smithsonian National Museum of Natural History, 10th & Constitution Ave., NW, Washington, DC 20560, 202/633-1000, [www.mnh.si.edu](http://www.mnh.si.edu), daily 10–5:30, through August 13. In collaboration with Magnum Photos, “Unintended Journeys” provides a glimpse into the lives of humans displaced by global climate change and some of the most devastating natural disasters in the past decade.

**Garry Winogrand** The National Gallery of Art, 6th St. at Constitution Ave., NW, Washington, DC 20565, 202/842-6353, [www.nga.gov](http://www.nga.gov), M–Sat 10–5, Sun 11–6, March 2 – June 8, 2014.

**Women of Vision** National Geographic Museum, 1145 17th St., NW, Washington, DC 20036, 202/857-7588, [www.nationalgeographic.com](http://www.nationalgeographic.com), daily 10–6, through March 9.

**Fred Zafran** “7th and H Streets, NW,” Multiple Exposures Gallery, 105 North Union St., Studio 312, Torpedo Factory Art Center, Alexandria, VA 22314, 703/683-2205, [www.multipleexposuresgallery.com](http://www.multipleexposuresgallery.com), daily 11–5, February 18 – March 30.

## VIRGINIA

**Louis Draper** “Retrospective,” Candela Gallery, 214 W. Broad St., Richmond, VA 23220, 804/225-5527, [www.candelabooks.com](http://www.candelabooks.com), M–F 11–5, Sat 1–5, through February 22.

**New Relics for the Old Acrimony** 12 12 Gallery, 0 E. 4th St., #39, Richmond, VA 23224, 804/301-6971, [www.1212richmond.com](http://www.1212richmond.com), F–Sun 12–4, through March 9.

## VIRGINIA continued

**Signs of Protest: Photographs from the Civil Rights Era** Virginia Museum of Fine Arts, 200 N. Boulevard, Richmond, VA 23220, 804/340-1400, [www.vmfa.museum](http://www.vmfa.museum), M–F 9–5, Sat 9:30–4:30, through August 3.

## PITTSBURGH AREA

**David Aschkenas** “Arena: Remembering the Igloo,” 707 Gallery, 707 Penn Ave., Pittsburgh, PA 15222, 412/456-6666, [www.trustarts.org](http://www.trustarts.org), W–Th 11–6, F–Sat 11–8, Sun 11–5, through March 2.

**Kelly Bogel** “Palimpsests: Ghost Signs of Pittsburgh,” Pittsburgh Filmmakers, 477 Melwood Ave., Pittsburgh, PA 15213, 412/681-5449, [www.pghfilmmakers.org](http://www.pghfilmmakers.org), M–F 12–5, or by appt., March 14 – May 16.

**Fellowship 14: Projects by Donna J. Wan & Aaron MacLachlan** Silver Eye Center for Photography, 1015 East Carson St., Pittsburgh, PA 15203, 412/431-1810, [www.silvereye.org](http://www.silvereye.org), T–Sat 12–6, through March 22. The exhibition also includes one photo by each of the five judges: Victoria Crayhon, Johanne Seines Svendsen, Kevin Sweeney, Christian Werner, and Yoong Alex Wong.

**Jennifer Myers** “Women In Time,” Pittsburgh Center for the Arts, Mellon Park, 6300 Fifth Ave., Pittsburgh, PA 15232, 412/361-0873, [www.pittsburgharts.org](http://www.pittsburgharts.org), T–Sat 10–5, Sun 12–5, through April 20.

**Taryn Simon** “Birds of the West Indies,” The Carnegie Museum of Art, 4400 Forbes Ave., Pittsburgh, PA 15213, 412/622-3131, [www.cmoa.org](http://www.cmoa.org), M–Sat 10–5, Sun 12–5, through April 12.

**2013 Carnegie International** The Carnegie Museum of Art, 4400 Forbes Ave., Pittsburgh, PA 15213, 412/622-3131, [www.cmoa.org](http://www.cmoa.org), M–Sat 10–5, Sun 12–5, through March 16.

## NORTHEASTERN PENNSYLVANIA

**Theo Anderson** “Complexity,” DuBois Gallery, Maginnes Hall, 9 E. Packer Ave., Lehigh University, Bethlehem, PA 18015, 610/758-3615, [www.luag.org](http://www.luag.org), M–F 9 AM–10 PM, Sat 9–noon, through May 17.

**Mikhael Antone** “Sense of Place,” Camerawork Gallery Downstairs, The Laundry Building, 515 Center St., Scranton, PA 18503, 570/344-3313, [www.cameraworkgallery.org](http://www.cameraworkgallery.org), M–F 10–6, Sat 10–5, April 4–29. Reception, April 4, 6–8:15 PM.

**Main Street Views: Photographs from the Historic Bethlehem, Inc. Collections** Historic Visitor Center, 505 Main St., Bethlehem, PA 18018, 610/691-6055, T–Sat 10–5, Sun 11–4, through February 28.

**Thomas Pickarski** “The Middle of Nowhere,” Camerawork Gallery Downstairs, The Laundry Building, 515 Center St., Scranton, PA 18503, 570/344-3313, [www.cameraworkgallery.org](http://www.cameraworkgallery.org), M–F 10–6, Sat 10–5, March 7–30. Reception, March 7, 6–8:15 PM.

**Jett Ulaner Sarachek** “Explorations,” Banko Family Gallery, The Banana Factory, 25 W. 3rd St., Bethlehem, PA 18015, 610/332-1300, [www.bananafactory.org](http://www.bananafactory.org), M–F 8–9:30, Sat–Sun 8:30–5, through March 16.

**William Earle Williams** “A Stirring Song Sung Heroic: African Americans from Slavery to Freedom, 1619 to 1865,” Main Gallery, Zoellner Arts Center, 420 E. Packer Ave., Lehigh University, Bethlehem, PA 18015, 610/758-3615, [www.luag.org](http://www.luag.org), W–Sat 11–5, Sun 1–5, through May 25.

## CENTRAL AND WESTERN PENNSYLVANIA

**Dan Lobdell** “The Course of Empire: Post-Industrial Cities,” Art Space, East Bldg., Harrisburg Area Community College, Lancaster Campus, 1641 Old Philadelphia Pike, Lancaster, PA 17602, 717/293-5000, M–Th 9–7, F 9–5, through February 27.

**Marcellus Shale Documentary Project** Doane Hall of Art, Allegheny College, 520 N. Main St., Meadville, PA 16335, 814/332-4365, [www.allegheny.edu](http://www.allegheny.edu), T–F 12:30–5, Sat 1:30–5, Sun 2–4, through February 26.

**Robert Polidori** “Selected Works,” Erie Art Museum, 411 State St., Erie, PA 16501, 814/459-5477, [www.erieartmuseum.org](http://www.erieartmuseum.org), T–Sat 11–5, Sun 1–5, through April 13.

**Robert E. Wedge** “A Moment of Emotion,” Southern Alleghenies Museum of Art at Altoona, 1210 Eleventh Ave., Altoona, PA 16601, 814/946-4464, [www.sama-art.org/ex\\_ev/altoona.htm](http://www.sama-art.org/ex_ev/altoona.htm), T–F 10–5, Sat 1–5, through April 12.

## NORTHERN CALIFORNIA

**All About the Image** Robert Tat Gallery, 49 Geary St., Ste. 211, San Francisco, CA 94108, 415/781-1122, [www.roberttat.com](http://www.roberttat.com), T–Sat 11–5:30, through February 22.

**A Sense of Place** Pier 24 Photography, Pier 24 The Embarcadero, San Francisco, CA 94105, 415/512-7424, [pier24.org](http://pier24.org), by appointment only M–Th 9–5, through May 1.

**Doug Hall** “Franz Kafka and Milena Jesenská: Letters in the Dark,” Rena Bransten Gallery, 77 Geary St., San Francisco, CA 94108, 415/982-3292, [www.renabranstengallery.com](http://www.renabranstengallery.com), T–F 10:30–5:30, Sat 11–5, February 20 – March 29.

**Brigitte Carnochan** “Natural Beauty,” Modernbook, 49 Geary, 4th fl., San Francisco, CA 94108, 415/732-0300, [www.modernbook.com](http://www.modernbook.com), T–Sat 10:30–5:30, through March 1.

**Sarah Christianson** “When the Landscape Is Quiet Again: North Dakota’s Oil Boom,” SF Camerawork, 1011 Market St., 2nd fl., San Francisco, CA 94103, 415/487-1011, [sfcamera@sfcamerawork.org](mailto:sfcamera@sfcamerawork.org), [sfcamerawork.org](http://sfcamerawork.org), W–Sat 12–5, through April 19. Panel Discussion, Thursday, April 10, 6–8 PM, “*What the Frack?!*”, featuring artist Sarah Christianson with participants from [Earth Justice](http://EarthJustice.org) and [The Sierra Club](http://TheSierraClub.org).

**Critical Mass: How One Thing Leads to Another** Corden/Potts Gallery, 49 Geary St., Ste. 410, San Francisco, CA 94108, 415/781-0110, [cordenpottsgallery.com](http://cordenpottsgallery.com), T–Sat 11–5:30, first Th of the month 11–7:30, March 6 – March 29.

**Enrique De La Uz** “Cuba Zafra,” PHOTO, 473 25th St., Oakland, CA 94612, 510/847-2416, [info@photogalleryoakland.com](mailto:info@photogalleryoakland.com), [photogalleryoakland.com](http://photogalleryoakland.com), Th–Sat 12–6, through February 22.

**Buck Ellison** Ratio 3, 2831A Mission St., San Francisco, CA 94110, 415/821-3371, [www.ratio3.org](http://www.ratio3.org), T–Sat 11–6, February 21 – March 29.

**Paz Errázuri** UC Berkeley Art Museum and Pacific Film Archive, 2625 Durant Ave., Berkeley, CA 94720, 510/642-0808, [www.bampfa.berkeley.edu](http://www.bampfa.berkeley.edu), W–Sun 11–5, through March 30.

**Lalla Essaydi** “New Beauty,” Jenkins Johnson Gallery, 464 Sutter St., San Francisco, CA 94108, 415/677-0770, [www.jenkinsjohnsongallery.com](http://www.jenkinsjohnsongallery.com), T–F 10–6, Sat 1–5, through March 29.

**Extraordinary People: Portraits by Yousuf Karsh** Monterey Museum of Art (Via Mirada), 720 Via Mirada, Monterey, CA 93940, 831/372-3689, [montereyart.org](http://montereyart.org), W–Sat 11–5, Sun 1–4, through March 30.

## NORTHERN CALIFORNIA continued

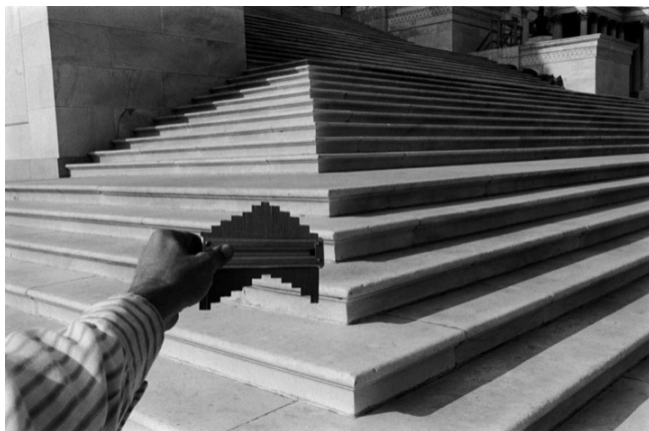
**Flesh and Metal: Body and Machine in Early 20th-Century Art** Cantor Arts Center, Stanford University, Palm Drive at Museum Way, Stanford, CA 94305, 650/723-4177, <http://museum.stanford.edu>, W–Sun 11–5, Th 11–8, through March 16.

**Nan Goldin** “Nine Self Portraits,” Fraenkel Gallery, 49 Geary St., 4th fl., San Francisco, CA 94108, 415/981-2661, [mail@fraenkelgallery.com](mailto:mail@fraenkelgallery.com), [fraenkelgallery.com](http://fraenkelgallery.com), T–F 10:30–5:30, Sat 11–5, through March 8.

**Katy Grannan** “The 99,” Fraenkel Gallery, 49 Geary St., 4th fl., San Francisco, CA 94108, 415/981-2661, [mail@fraenkelgallery.com](mailto:mail@fraenkelgallery.com), [fraenkelgallery.com](http://fraenkelgallery.com), T–F 10:30–5:30, Sat 11–5, March 13 – April 26.

**Chip Hooper** “Surf,” Weston Gallery, PO Box 655, Sixth Ave. and Dolores St., Carmel, CA 93921, 831/624-4453, [info@westongallery.com](mailto:info@westongallery.com), [westongallery.com](http://westongallery.com), T–Sun 10:30–5:30, through March 24.

**Peter Hujar** “Love & Lust,” Fraenkel Gallery, 49 Geary St., 4th fl., San Francisco, CA 94108, 415/981-2661, [mail@fraenkelgallery.com](mailto:mail@fraenkelgallery.com), [fraenkelgallery.com](http://fraenkelgallery.com), T–F 10:30–5:30, Sat 11–5, through March 8.



**Kenneth Josephson:** *Washington, D.C., 1975*, at Robert Koch Gallery, San Francisco

**Kenneth Josephson** Robert Koch Gallery, 49 Geary St., 5th fl., San Francisco, CA 94108, 415/421-0122, [info@kochgallery.com](mailto:info@kochgallery.com), [kochgallery.com](http://kochgallery.com), T–Sat 11–5:30, through March 29.

**Max Kellenberger/Jacqueline Walters/Ewa Monica Zebrowski** Corden/Potts Gallery, 49 Geary St., Ste. 410, San Francisco, CA 94108, 415/781-0110, [cordenpottsgallery.com](http://cordenpottsgallery.com), T–Sat 11–5:30, first Th of the month 11–7:30, through March 1.

**Bob Kolbrener: In Real Time: Celebrating Fifty Years in Photography** Monterey Museum of Art Pacific Street, 559 Pacific St., Monterey, CA 93940, 831/372-5477, [info@montereyart.org](mailto:info@montereyart.org), or [www.montereyart.org](http://www.montereyart.org), W–Sat 11–5, Sun 1–4, through April 28.

**Vivian Maier** “See All About It,” Reva & David Logan Gallery of Documentary Photography, U.C. Berkeley Graduate School of Journalism, North Gate Hall, Corner of Hearst & Euclid, Berkeley, CA, 510/642-3383, [journalism.berkeley.edu/events](http://journalism.berkeley.edu/events), M–F 9–6, March 3 – May 1. Vivian Maier’s Newspaper Portraits. Reception, April 2, 5–6:15 PM, gallery talk 6:15–7:15 PM.

**Vivian Maier** “Out of the Shadows,” Scott Nichols Gallery, 49 Geary St., 4th fl., San Francisco, CA 94108, 415/788-4641, [info@scottnicholsgallery.com](mailto:info@scottnicholsgallery.com), [scottnicholsgallery.com](http://scottnicholsgallery.com), T–Sat 11–5, through April 26.

**Lauren Marsolier** “Transition,” Robert Koch Gallery, 49 Geary St., 5th fl., San Francisco, CA 94108, 415/421-0122, [info@kochgallery.com](mailto:info@kochgallery.com), [kochgallery.com](http://kochgallery.com), T–Sat 11–5:30, through March 29.

**Ben Nixon and Esmeralda Ruiz** “The Once and Future Landscape,” Center For Photographic Art, Sunset Cultural Center, San Carlos and 9th St., Carmel, CA 93921, 831/625-5181, [info@photography.org](mailto:info@photography.org), [photography.org](http://photography.org), T–Sun 1–5, March 8 – April 26.

**One Thing Leads to Another** Corden/Potts Gallery, 49 Geary St., Ste. 410, San Francisco, CA 94108, 415/781-0110, [cordenpottsgallery.com](http://cordenpottsgallery.com), T–Sat 11–5:30, first Th of the month 11–7:30, March 6–29.

**Public Intimacy: Art and Other Ordinary Acts in South Africa** Yerba Buena Center for the Arts, 701 Mission St., San Francisco, CA 94103, 415/978-2787, [www.ybca.org](http://www.ybca.org), Th–Sat 12–8, Sun 12–6, February 21 – June 8.

**Gail Parris and Raven Victoria Erevus** “Avian Studies,” Viewpoint Gallery, 2015 J St., Ste. 101, Sacramento, CA 95811, 916/441-2341, [www.viewpointgallery.org/home](http://www.viewpointgallery.org/home), T–Th 12–6, F–Sat 12–5, March 5 – April 5.

**Photographs from the Bhutan Workshop** Viewpoint Gallery, 2015 J St., Ste. 101, Sacramento, CA 95811, 916/441-2341, [www.viewpointgallery.org/home](http://www.viewpointgallery.org/home), T–Th 12–6, F–Sat 12–5, March 5 – April 5.

**Quietude** Corden/Potts Gallery, 49 Geary St., Ste. 410, San Francisco, CA 94108, 415/781-0110, [cordenpottsgallery.com](http://cordenpottsgallery.com), T–Sat 11–5:30, first Th of the month 11–7:30, through March 1.

**Siberia: In the Eyes of Russian Photographers** Sonoma County Museum, 425 Seventh St., Santa Rosa, CA 95401, 707/579-1500, [www.sonomacountymuseum.org](http://www.sonomacountymuseum.org), T–Sun 11–5, June 14 – August 24.

**David Sokosh** “American Tintypes,” Robert Tat Gallery, 49 Geary St., Ste. 211, San Francisco, CA 94108, 415/781-1122, [www.roberttat.com](http://www.roberttat.com), T–Sat 11–5:30, through February 22. Reception, Saturday, April 5, 3–5 PM, gallery walk-through at 4 PM.

**Robert Stivers** Modernism, 685 Market St., San Francisco, CA 94105, 415/541-0461, [info@modernisminc.com](mailto:info@modernisminc.com), [modernisminc.com](http://modernisminc.com), T–Sat, 10–5:30, through March 1.

**Brian Taylor** Gallery 291, 401 Miller Ave., Mill Valley, CA 94941, 415/888-3583, [www.gallery291.net](http://www.gallery291.net), M–Th 10–6, through March 31.

**The Bay Bridge: A Work in Progress, 1933–1936** De Young Museum, Golden Gate Park, 50 Hagiwara Tea Garden Dr., San Francisco, CA 94118, 415/750-3600, [deyoungmuseum.org](http://deyoungmuseum.org), T–Sun 9:30–5:15, F 9:30–8:45, through June 8.

**The Honest Landscape: Photographs by Peter Henry Emerson from the 1880s** Cantor Arts Center, Stanford University, Palm Drive at Museum Way, Stanford, CA 94305, 650/723-4177, <http://museum.stanford.edu>, W–Sun 11–5, Th 11–8, through May 18.

**This Land is Our Land: Phillip Hyde and America’s Wilderness** Smith Andersen North Gallery, 20 Greenfield Ave., San Anselmo, CA 94960, 415/455-9733, [jennifer@smithandersennorth.com](mailto:jennifer@smithandersennorth.com), [www.smithandersennorth.com](http://www.smithandersennorth.com), T–F 10–6, Sat 12–5, through March 1.

**2014 Juried Exhibition** Center For Photographic Art, Sunset Cultural Center, San Carlos and 9th St., Carmel, CA 93921, 831/625-5181, [info@photography.org](mailto:info@photography.org), [photography.org](http://photography.org), T–Sun 1–5, through March 1.

## NORTHERN CALIFORNIA continued

**Gary Wagner** “Sierra Mountain Wilderness,” Viewpoint Gallery, 2015 J St., Ste.101, Sacramento, CA 95811, 916/441-2341, [www.viewpointgallery.org/home](http://www.viewpointgallery.org/home), T–Th 12–6, F–Sat 12–5, through March 1.

**Max Whittaker/Jim Klein** Viewpoint Gallery, 2015 J St., Ste.101, Sacramento, CA 95811, 916/441-2341, [www.viewpoint-gallery.org/home](http://www.viewpoint-gallery.org/home), T–Th 12–6, F–Sat 12–5, through March 1. “In the Shadow of the Sun” by Whittaker, “Wheatland Snapshots” by Klein.

## SOUTHERN CALIFORNIA

**After Image** Irvine Fine Arts Center, 14321 Yale Ave., Irvine, CA 92604, 949/724-6880, [www.irvinefinearts.org](http://www.irvinefinearts.org), M–Th 10–9, F 10–5, Sat 9–5, through March 1.



**Robert Glenn Ketchum:** *Brewster Boogie Woogie #27*, from “Shifting Landscape, Shifting Vision,” at The G2 Gallery, Venice, CA

**Ansel Adams/Robert Glenn Ketchum/Eliot Porter** “Shifting Landscape, Shifting Vision,” The G2 Gallery, 1503 Abbot Kinney Blvd., Venice, CA 90291, 310/452-2842, [info@theg2gallery.com](mailto:info@theg2gallery.com), [www.theg2gallery.com](http://www.theg2gallery.com), M–Sat 10–7, Sun 10–6, through March 2.

**Caren Alpert** “Terra Cibus: the Beauty and Biology of Our Food,” PHOTO, 473 25th St., Oakland, CA 94612, 510/847-2416, [info@photogalleryoakland.com](mailto:info@photogalleryoakland.com), [photogalleryoakland.com](http://photogalleryoakland.com), Th–Sat 12–6, February 27 – April 12.

**A Royal Passion: Queen Victoria and Photography** Getty Center, 1200 Getty Center Dr., Los Angeles, CA 90049, 310/440-7300, [getty.edu](http://getty.edu), T–F 10–5:30, Sat 10–9, Sun 10–5:30, through June 8.

**Thomas Barrow** “The Fashion Show,” Joseph Bellows Gallery, 7661 Girard Ave., La Jolla, CA 92037, 858/456-5620, [info@josephbellows.com](mailto:info@josephbellows.com), [josephbellows.com](http://josephbellows.com), T–Sat 10–5, April 12 – May 31.

**Matthew Brandt** “Sticky/Dusty/Wet,” M+B Gallery, 612 N. Almont Dr., Los Angeles, CA 90069, 310/550-0050, [info@mbart.com](mailto:info@mbart.com), [mbart.com](http://mbart.com), T–Sat 10–6, through March 9.

**E J Camp** “Sea,” Leica Gallery, 8783 Beverly Blvd., W. Hollywood, CA 90048, 424/777-0341, [www.leicagalleryla.com](http://www.leicagalleryla.com), M–Sat 10–6, Sun 12–5, through March 1.

**Kevin Cooley & Phillip Andrew Lewis** “Unexplored Territory,” Kopeikin Gallery, 2766 La Cienega Blvd., Los Angeles, CA 90034, 310/559-0800 [info@kopeikingallery.com](mailto:info@kopeikingallery.com), [kopeikingallery.com](http://kopeikingallery.com), T–Sat 11–5, through February 22.

**Noah Doely** “By the Light,” San Diego Museum of Art, 1450 El Prado, Balboa Park, San Diego, CA 92112, 619/232-7931, [www.sdmart.org](http://www.sdmart.org), M–T & Th–F 10–5, Sat 12–5, through February 25.

**William Eggleston** “At Zenith,” Gagosian Gallery, 456 N. Camden Dr., Beverly Hills, CA 90210, 310/271-9400, [info@gagosian.com](mailto:info@gagosian.com), [gagosian.com](http://gagosian.com), T–Sat 10–6, through February 20.

**Electron Salon** Los Angeles Center for Digital Art, 102 W. Fifth St., Los Angeles, CA 90013, 102 5th St., Los Angeles, CA 90013, 323/646-9427, [www.lacda.com](http://www.lacda.com), W–Sat 12–5, through March 5.

**Lynn G. Fayman** “A Colorful Life,” Museum of Photographic Arts, 1649 El Prado, San Diego, CA 92101, 619/238-7559, [mopa.org](http://mopa.org), T–Sun 10–5, through May 11.

**Peter Fischli/David Weiss** Matthew Marks Gallery, 1062 N. Orange Grove, Los Angeles, CA 90046, 323/654-1830, [www.matthewmarks.com](http://www.matthewmarks.com), T–Sat 10–6, through April 12.

**Flash: Job Piston** UCR/California Museum of Photography, 3824 Main St., Riverside, CA 92501, 951/784-3686, [cmp.ucr.edu](http://cmp.ucr.edu), T–Sat 12–5, through February 22.

**Robbert Flick** “Freeways,” ROSEGALLERY, Bergamot Station, 2525 Michigan Ave., G-5, Santa Monica, CA 90404, 310/264-8440 [info@rosegallery.net](mailto:info@rosegallery.net), [rosegallery.net](http://rosegallery.net), T–Sat 10–6, through April 12.

**Allen Gill/Dan Shepherd** dnj Gallery, Bergamot Station, 2525 Michigan Ave., Ste. J1, Santa Monica, CA 90404, 310/315-3551, [info@dnjgallery.net](mailto:info@dnjgallery.net), [dnjgallery.net](http://dnjgallery.net), T–Sat 10–6, March 8 – April 26. “Xradiography” by Allan Gill, “Alaska/California Collection” by Shepherd.

**Dan Gluibizzi** “Between Friends,” Kopeikin Gallery, 2766 La Cienega Blvd., Los Angeles, CA 90034, 310/559-0800 [info@kopeikingallery.com](mailto:info@kopeikingallery.com), [kopeikingallery.com](http://kopeikingallery.com), T–Sat 11–5, March 1 – April 19.

**Heavenly Bodies** Santa Barbara Museum of Art, 1130 State St., Santa Barbara, CA 93101, 805/963-4364, [sbma.net](http://sbma.net), T–Sun 11–5, February 22 – May 25.

**Sol Hill** (“Signal from Noise”)/**Domenico Foschi** (“Women”)/**Sara Jane Boyers** (“Gridlock”) Leica Gallery, 8783 Beverly Blvd., W. Hollywood, CA 90048, 424/777-0341, [www.leicagalleryla.com](http://www.leicagalleryla.com), M–Sat 10–6, Sun 12–5, through March 8 – April 5.

**David Hockney** “The Jugglers,” Los Angeles County Museum of Art, 5905 Wilshire Blvd., Los Angeles, CA 90036, 323/857-6000 [www.lacma.org](http://www.lacma.org), M, T & Th 12–8, F 12–9, Sat–Sun 11–8, through April 20.

**John Humble** “Pico Boulevard,” Craig Krull Gallery, Bergamot Station, 2525 Michigan Ave., Bldg. B-3, Santa Monica, CA 90404, 310/828-6410, [www.craigkrullgallery.com](http://www.craigkrullgallery.com), T–F 10–5:30, Sat 11–5:30, through February 22.

**In Focus: Architecture** Getty Center, 1200 Getty Center Dr., Los Angeles, CA 90049, 310/440-7300, [getty.edu](http://getty.edu), T–F 10–5:30, Sat 10–9, Sun 10–5:30, through March 2.

**Internal Ballistics: Photography of Deborah Bay & Sabine Pearlman** Wall Space Gallery, 116 E. Yanonali St., C-1, Santa Barbara, CA 93101, 805/637-3898, [crista@wall-spacegallery.com](mailto:crista@wall-spacegallery.com), [wall-spacegallery.com](http://wall-spacegallery.com), T–Sat 11–5:30, Sun 12–5, through March 30.

## SOUTHERN CALIFORNIA continued

**Michael Kenna/Pentti Sammallahti** Peter Fetterman Gallery, Bergamot Station, 2525 Michigan Ave., #A1, Santa Monica, CA 90404, 310/453-6463 [peter@peterfetterman.com](mailto:peter@peterfetterman.com), [peterfetterman.com](http://peterfetterman.com), T–Sat 11–6, through March 1.

**LACDA 2014 International Juried Competition** Los Angeles Center for Digital Art, 102 W. Fifth St., Los Angeles, CA 90013, 102 5th St., Los Angeles, CA 90013, 323/646-9427, [www.lacda.com](http://www.lacda.com), W–Sat 12–5, March 13 – April 6.

**Landscape Into Abstraction** Orange County Museum of Art, 850 San Clemente Dr., Newport Beach, CA 92660, 949/759-1122, [www.ocma.net](http://www.ocma.net), W, F–Sun 11–5, Th 11–8, through March 9. Includes work by Robert Glenn Ketchum.

**R. Dean Larson** “HydroGraphics,” dnj Gallery, Bergamot Station, 2525 Michigan Ave., Ste. J1, Santa Monica, CA 90404, 310/315-3551, [info@dnjgallery.net](mailto:info@dnjgallery.net), [dnjgallery.net](http://dnjgallery.net), T–Sat 10–6, through March 1.

**LATINO/US Cotidiano** Museum of Latin American Art, 628 Alamitos Ave., Long Beach, CA 90802, 562/437-1689, <http://mola.org/index.aspx>, W, Th, Sat–Sun 11–5, F 11–9, through February 23.

**Peter Lindbergh** Fahey/Klein Gallery, 148 N. La Brea Ave., Los Angeles, CA 90036, 323/934-2250, [fkf@earthlink.net](mailto:fkf@earthlink.net), [www.faheykleingallery.com](http://www.faheykleingallery.com), T–Sat 10–6, February 27 – April 19.

**Robert Mapplethorpe** “As Above, So Below,” OHWOW, 937 N. La Cienega Blvd., Los Angeles, CA 90069, 310/652-1711, [ohwow.com](http://ohwow.com), T–Sat 11–6, February 28 – March 29.

**Yamamoto Masao** “Shizuka=Cleanse,” Craig Krull Gallery, Bergamot Station, 2525 Michigan Ave., Bldg. B-3, Santa Monica, CA 90404, 310/828-6410, [www.craigkrullgallery.com](http://www.craigkrullgallery.com), T–F 10–5:30, Sat 11–5:30, March 1 – April 5. Reception, Saturday, March 1, 1–4 PM.

**Michael Miner** “Nature LA,” The G2 Gallery, 1503 Abbot Kinney Blvd., Venice, CA 90291, 310/452-2842, [info@theg2gallery.com](mailto:info@theg2gallery.com), [www.theg2gallery.com](http://www.theg2gallery.com), M–Sat 10–7, Sun 10–6, through March 2.

**Johnny Naked** “Digital Taoism,” Los Angeles Center for Digital Art, 102 W. Fifth St., Los Angeles, CA 90013, 102 5th St., Los Angeles, CA 90013, 323/646-9427, [www.lacda.com](http://www.lacda.com), W–Sat 12–5, through March 4.

**Han Nguyen** Joseph Bellows Gallery, 7661 Girard Ave., La Jolla, CA 92037, 858/456-5620, [info@josephbellows.com](mailto:info@josephbellows.com), [josephbellows.com](http://josephbellows.com), T–Sat 10–5, through March 1.

**Bill Owens/John Thacker** “Jamaica THEN – Cuba NOW,” PhotoCentral Gallery, Hayward Area Park & Recreation District Offices, 1099 E St., Hayward, California, 94544, 510/881-6721, [www.photocentral.org](http://www.photocentral.org), M 5–10, T–Th 10–1, and by appt., through April 12. “Peace Corps 1964–1966” by Owens, “Cuba 2010–2011” by Thacker.

**Portraits of the 20th Century** Peter Fetterman Gallery, Bergamot Station, 2525 Michigan Ave., #A1, Santa Monica, CA 90404, 310/453-6463 [peter@peterfetterman.com](mailto:peter@peterfetterman.com), [peterfetterman.com](http://peterfetterman.com), T–Sat 11–6, March 15 – May 31.

**Mei Xian Qiu** “Qilin,” Kopeikin Gallery, 2766 La Cienega Blvd., Los Angeles, CA 90034, 310/559-0800 [info@kopeikingallery.com](mailto:info@kopeikingallery.com), [kopeikingallery.com](http://kopeikingallery.com), T–Sat 11–5, March 1 – April 19.

**Alan Ross** The G2 Gallery, 1503 Abbot Kinney Blvd., Venice, CA 90291, 310/452-2842, [info@theg2gallery.com](mailto:info@theg2gallery.com), [www.theg2gallery.com](http://www.theg2gallery.com), M–Sat 10–7, Sun 10–6, through March 2.

**See the Light-Photography, Perception, Cognition: The Marjorie and Leonard Vernon Collection** Los Angeles County Museum of Art, 5905 Wilshire Blvd., Los Angeles, CA 90036, 323/857-6000 [www.lacma.org](http://www.lacma.org), M, T & Th 12–8, F 12–9, Sat–Sun 11–8, through March 23.

**Phil Stern** “Hollywood Big Shots,” Fahey/Klein Gallery, 148 N. La Brea Ave., Los Angeles, CA 90036, 323/934-2250, [fkf@earthlink.net](mailto:fkf@earthlink.net), [www.faheykleingallery.com](http://www.faheykleingallery.com), T–Sat 10–6, through February 22.

**Hiroshi Sugimoto** “Past Tense,” Getty Center, 1200 Getty Center Dr., Los Angeles, CA 90049, 310/440-7300, [getty.edu](http://getty.edu), T–F 10–5:30, Sat 10–9, Sun 10–5:30, through June 8.

**The Power of Photography: National Geographic 125 Years** Annenberg Space for Photography, 2000 Ave. of the Stars, Century City, CA 90067, 213/403-3000, [annenberg.spaceforphotography.org](http://annenberg.spaceforphotography.org), W–Sun 11–6, through April 27.

**Paul Turounet** Jdc Fine Art, 400 Kettner Blvd., Ste. 208, San Diego, CA 92101, 619/985-2322, T–F 11–5, [www.jdcfineart.com](http://www.jdcfineart.com), Sat 12–5, through February 28.

**Unsparring Quality** Diane Rosenstein Fine Art, 831 Highland Ave., Los Angeles, CA 90038, 323/397-9225, [www.dianerosestein.com](http://www.dianerosestein.com), T–Sat 10–6, through March 15.

**Robert von Sternberg** “Black & White Vintage Photographs,” dnj Gallery, Bergamot Station, 2525 Michigan Ave., Ste. J1, Santa Monica, CA 90404, 310/315-3551, [info@dnjgallery.net](mailto:info@dnjgallery.net), [dnjgallery.net](http://dnjgallery.net), T–Sat 10–6, through March 1.

**Gillian Ware** “L.A. Tree Portraits,” Los Angeles Center for Digital Art, 102 W. Fifth St., Los Angeles, CA 90013, 102 5th St., Los Angeles, CA 90013, 323/646-9427, [www.lacda.com](http://www.lacda.com), W–Sat 12–5, through March 4.

**Hannah Whitaker** M+B Gallery, 612 N. Almont Dr., Los Angeles, CA 90069, 310/550-0050, [info@mbart.com](mailto:info@mbart.com), [mbart.com](http://mbart.com), T–Sat 10–6, March 15 – April 26.

**Stephen H. Willard** “Photographs of the West,” Palm Springs Art Museum, 101 Museum Dr., Palm Springs, CA 92262, 760/322-4800, [www.psmuseum.org](http://www.psmuseum.org), T–W & F–Sun 10–5, Th 12–8, through April 6.

**Women, War, and Industry** San Diego Museum of Art, 1450 El Prado, Balboa Park, San Diego, CA 92112, 619/232-7931, [www.sdmart.org](http://www.sdmart.org), M–T & Th–F 10–5, Sat 12–5, through February 18. Includes work by Margaret Bourke-White, Esther Bubley, Alfred Eisenstaedt, Berenice Abbot, and others.

## CALLS FOR WORK

**Camerawork Gallery.** “Exhibition Opportunities.” Deadline: Ongoing. Camerawork is accepting proposals from photographers for future exhibitions at the Camerawork Gallery in Scranton, PA. If you are interested in showing your work in the Camerawork Gallery please submit all of the following for review: 3–6 exhibition quality, unmated and unframed prints representing the body of work you want to exhibit. CD, DVD or web URL with additional examples of work you plan on showing in jpg format only. Brief statement describing the work. A self-addressed, stamped envelope for return of these materials. Complete contact information including mailing address, phone number, email address. Your submission must include the materials outlined above to qualify for consideration. Please send these materials to: Ivana Pavelka, 585 Bardwell Rd., Factoryville, PA 18419. Questions should be addressed to Ivana at 570/351-6973.



# The Mobile Masters PROOF Mobile Photo Contest

The prizes are valued at over \$3000 but the exposure... Priceless

## THE PRIZE COUNT IS EXPANDING!

- 1** All winners receive **Personal Features** in the interactive ebook Mobile Masters
- 2** All winners receive **East Coast Print Show** that may travel
- 3** All winners **Shown at Macworld** / iWorld Expo
- 4** All who enter get an Exclusive **45 Minute Video Tutorial** on Adobe PS touch
- 5** First twenty Five who enter get the **iPhone Obsessed Collection** of eBooks
- 6** Three winners will get the **Adobe Creative Cloud** one Year membership \$600 dollar value each
- 7** Three winners will get free entry to the **Mobile Masters Workshop** at Macworld San Francisco worth over \$300 each
- 8** Two winners will get **Feature Stories** in the The App Whisperer
- 9** Five people will be invited to become **Elite members of Room** from room the agency
- 10** Three people will be **Featured in FLTR Mag** from The British Journal of Photography
- 11** Two Artists will receive 8 by 10 **Bamboo Prints** from iPhoneart
- 12** One Artist will receive the full first year collectable collection of **Shooter Magazine**
- 13** Three winners will get the brand new lens from **OloClip**
- 14** Fifteen random people will get various **App Packs**

## A Unique Contest & Unique Judges

Submit a Complete ePortfolio! Since good work is not just about getting one or two lucky shots, but rather about a sustained vision across a body of work, we will be looking at broader e-portfolios of work via a link like Flickr, Instagram or other web based portfolio site.

We want the work chosen to be considered more than just good "mobile" work so we have invited a diverse, distinguished group of jurors comprising three from the fine art photography world and three top mobile photography artists. **More Info Tap Here**



**MobileMasters**

- Feature Spread In The eBook Mobile Masters iTunes App (48 TOTAL GIVEN)
- Winners Announced at Macworld 2014 (48 TOTAL GIVEN)
- Adobe Creative Cloud Adobe CC Membership 1 Year access to all CC Software! (3 TOTAL GIVEN)
- Gallery Show In Connecticut The Empty Spaces Project (48 TOTAL GIVEN)
- Free Macworld Admission Mobile Masters Session Included (3 TOTAL GIVEN)
- Feature Article In FLTR Mag British Journal of Photography (3 TOTAL GIVEN)
- Feature Article Day In The Life The App Whisperer.com (2 TOTAL GIVEN)
- 8 by 10 Bamboo Print Your Work iPrints from iPhoneart.com (3 TOTAL GIVEN)
- Mobile Photography Interview - A Conversation With Sharon LuVisi - A Very Talented Mobile Photographer Bringing Extraordinary Depth To Her Work (BY JENNIFER CARTER - JULY 5, 2013)
- Become an Elite Member of Room room/pocketstock (5 TOTAL GIVEN)
- Shooter Mobile Photo Magazine First Year Pack (4 magazines) (1 TOTAL GIVEN)
- PS Touch Tutorial INCLUDED WITH ENTRY All Who Enter Receive This 45 Min Video. (ALL TOTAL GIVEN)
- AppPack 3 RANDOM AWARD All Who Enter Could Win This! (5 TOTAL GIVEN)
- AppPack 2 RANDOM AWARD All Who Enter Could Win This! (5 TOTAL GIVEN)
- AppPack 1 RANDOM AWARD All Who Enter Could Win This! (5 TOTAL GIVEN)

## CALLS FOR WORK continued

**Hamilton Township Public Library.** The Hamilton Township Public Library of New Jersey is looking for artwork to be displayed on a short or long term loan basis. Photos will be considered. Spaces are limited and pieces for display will be selected by the Library. Please contact Susan Sternberg Assistant Director at 609/581-4060 x4003, or visit [www.hamiltonnjpl.org](http://www.hamiltonnjpl.org).

**PhotoPhilanthropy.** “Your Photo for Social Change.” Deadline: February 23, 2014. Show us what’s happening right before your eyes! Together with the mobile photography platform [EyeEm](http://EyeEm.com) and photojournalist Ed Kashi we are looking for photos that address important social issues. The winning shot will be selected and presented at the PhotoPhilanthropy Activist Awards on March 8 in San Francisco. For more info visit: <http://blog.eyeem.com>.

**The Center for Fine Art Photography.** “Black and White 2014, May 23 – July 12, 2014.” Deadline: February 26, 2014. Members: \$20 for the first five images, \$10 each additional; Non-Members: \$35 for the first five images, \$10 each additional. Juror: Jason Landry, writer, photography collector and owner of Panopticon Gallery in Boston. Complete information and submission instructions can be found at [www.c4fap.org](http://www.c4fap.org).

**Natural History Museum.** “50th Wildlife Photographer of the Year Competition.” Deadline: February 27, 2014. Fee: £30.00 for 18 or older. Free for photographers 17 and younger. Theme: The best wildlife photographs possible. Multiple monetary awards and prizes. For full submission and prize information visit [www.nhm.ac.uk/visit-us/wpy/competition](http://www.nhm.ac.uk/visit-us/wpy/competition).

**Mobile Masters.** “You Are the Proof.” Deadline: March 2, 2014. Fee: \$25 for six images entered in category #1 “Image Discovery” (and/or) \$25 for six images entered in category #2 “Image Invention.” The aim of this second edition of the Mobile Masters interactive eBook is to showcase Mobile Photography as a distinctive and expanding new movement in the history of the art form. Jurors: Karen Devine, Koci Hernandez, Dan Marcolina, Stephen Perloff, and Eric Shiner. For more information contact Dan Marcolina at 215/840-3355, [info@marcolina.com](mailto:info@marcolina.com), or visit [www.marcolina.com](http://www.marcolina.com).

**Foam Magazine.** “Foam Talent Call 2014: Are You the World’s Next Photography Talent?” Deadline: March 12, 2014. The annual Foam Talent Call is designed to showcase exceptional young photographers from all over the world. To learn more visit [www.foamtalent.com/](http://www.foamtalent.com/) - home.

**Maryland Federation of Art.** “Focal Point: Fine Art and Creative Photography,” May 23 – June 15. Deadline: March 20, 2014. A maximum of 6 original works created within the past 3 years may be entered. One or two entries \$35 (MFA members \$20). Additional four entries \$5 each. Entry fees are non-refundable. Membership may be processed during entry. Juror: Jennifer O’Neill, Director of Academic Advising for Undergraduate Photography at the Corcoran College of Art + Design. [Enter online](#).

**Noorderlicht.** Deadline: March 30, 2014. In a contemporary parallel to the vision of the Frisian author Jan Slauerhoff, the main exhibition looks at people around the world who want to think ‘outside the box’ and who, dissatisfied with the status quo, set out in search of alternatives. The exhibition will be presented simultaneously in the Fries Museum during the Noorderlicht 2014 International Photofestival and by the Singapore International Photofestival 2014. We are seeking photographers from every continent. Submissions and suggestions of photographers and curators are welcome. These can be sent to the curator Wim Melis, via ftp or by email to [pandora@noorderlicht.com](mailto:pandora@noorderlicht.com). For guidelines, [click here](#).

# PHOTO

## CALL FOR ENTRIES

BEST OF BOTANICALS  
NATIONAL JURIED EXHIBITION  
A Benefit for San Francisco Botanical Garden

**Entries due: April 3, 2014**

PHOTO | Fine Art Photography  
473 25th Street, Oakland CA  
website: [photogalleryoakland.com](http://photogalleryoakland.com)

**From classical to contemporary, from desert to rain-forest, from bud to decay, the natural form of flowers and plants has been contemplated by artists, philosophers, scientists . . . and everyone.**

- This is PHOTO’s second benefit for the San Francisco Botanical Garden. A percentage of sales will go to support their work in Golden Gate Park.
- PHOTO is part of Oakland Art Murmur located in Oakland’s Uptown Arts District. The exhibit will be seen by thousands of visitors during the June First Friday art walk, and during regular hours for the duration of the show.
- Best of Show Award: \$1000
- Harold Davis will speak on “Making the Botanical Photo: The Digital Print As an Artifact” on June 7. He is the recipient of many photo awards, a Moab Printmaking Master, and the author of numerous bestselling photography books, including “Photographing Flowers: Exploring Macro Worlds.”
- Exhibit dates: May 22 – June 28

**To enter: [photogalleryoakland.com/call-entries](http://photogalleryoakland.com/call-entries)**

**Texas Tech School of Art.** “Call for Submissions, 2014–2015 Solo Photography Exhibitions.” Deadline: March 28, 2014. Fee: \$10 for twenty digital images. The SRO Photo Gallery hosts an annual national competition for six to eight photographic art solo exhibitions. Portfolios are reviewed by a committee consisting of the Photography area of the School of Art and the Director of Landmark Arts. We look for portfolios that utilize photography in all styles, techniques, and aesthetic approaches. Consistency in the work as well as creative vision is important in the selection process. All entries are accepted through SlideRoom at [tuart.slideroom.com](http://tuart.slideroom.com). For more information visit [www.srophoto-gallery.org](http://www.srophoto-gallery.org) or contact Victoria Marie Bee, Director, SRO Photo Gallery, TTU School of Art, Lubbock, TX 79409, 806/742-1947, [srophoto-gallery.art@ttu.edu](mailto:srophoto-gallery.art@ttu.edu).

**The Greenburgh Public Library Foundation.** “5th Annual Westchester County Amateur Photo Contest,” May 2 – June 12, 2014. Deadline: March 15–31, 2014. Fee: none. The contest is open only to amateur photographers who are residents of New York’s Westchester County. For complete rules and submission guidelines visit [www.greenburghlibrary.org/photocontest](http://www.greenburghlibrary.org/photocontest).

**The California Academy of Sciences in San Francisco.** “Big Picture: Natural World Photography.” Deadline: March 31, 2014. Categories: Land Mammals; Birds; Insects; Reptiles; Marine Mammals; Fish and Amphibians; Waterscapes, Landscapes, and Plant Life. Big Picture encourages photographers from around the world to contribute their work to this competition that will both celebrate and illustrate the rich diversity of life on Earth and inspire action to protect and conserve it through the power of imagery. For more information visit [www.bigpicturecompetition.org](http://www.bigpicturecompetition.org).

## CALLS FOR WORK continued

**PX3 Prix de la Photographie Paris.** “Eighth Annual PX3 Competition.” Deadline: March 31, 2014. Accepted work showcased at the annual exhibition in Paris, included in the annual book, and viewed by leaders in the photography industry and a large public audience. Awards include the “Photographer of the Year.” Non-professional photographers compete for the “Best New Talent Award.” For more information or to enter visit <http://px3.fr/submit/>.

**Crusade for Art.** “\$10,000 Crusade Engagement Grant for Innovation.” Deadline: April 1, 2014. Fee: \$20. Crusade for Art has announced that it will award a \$10,000 grant to an individual photographer, or group of photographers, with the most innovative idea for increasing the artist’s audience and collector base. The unrestricted grant is created both to generate and highlight these innovations, and to underwrite the execution of the best idea. For more information, visit [www.crusadeforart.org/crusade-engagement-grant](http://www.crusadeforart.org/crusade-engagement-grant) or call 404/790-9078.

**The Museum of Contemporary Photography.** “2014 Snider Prize.” Deadline: April 1, 2014. The Museum of Contemporary Photography (MoCP) at Columbia College Chicago is now accepting submissions for the 2014 Snider Prize, a purchase award given to emerging artists as they leave graduate school. MoCP’s curatorial staff will select one artist and offer \$2,000 for the purchase of work to be added to its permanent collection. Application details can be found at [mocp.org](http://mocp.org).

**The Victor Pinchuk Foundation.** “Future Generation Art Prize.” Deadline: April 12, 2014. The Prize is open to all artists up to the age of 35 with the aim of acknowledging and giving long-term support to a future generation of artists from all over the world. The Prize is unique because of its global reach and highly democratic form of application via the Internet. The winner receives a total of \$100,000: \$60,000 as a cash award, and \$40,000 towards the production of new work. An additional \$20,000 is allocated to fund artist-in-residency programs for up to five special prizewinners. For full information visit [www.futuregenerationartprize.org](http://www.futuregenerationartprize.org).

**U.S.A. Landscape Photographer of the Year.** Deadline: April 17, 2014. Jurors: Art Wolfe, David Muench, Christopher Burkett, Jim Patterson, Tim Fitzharris, Marc Muench, Marc Adamus and Charlie Waite, and others. \$14,000 in prizes. Open to photographers from anywhere in the world with images made in the U.S.A. within the last five years. For more information visit [info@usalandscapephotographeroftheyear.com](mailto:info@usalandscapephotographeroftheyear.com).

### ADDITIONAL CALLS

**Photo Annual Awards.** “2014 Annual Photo Competition.” Deadline: April 14, 2014. Multiple Prizes. For full information and submission visit [www.photoannualawards.com](http://www.photoannualawards.com).

**Denise Bibro.** “Art From the Boros II 2014 Competition.” Deadline: February 28, 2014. For entry form and rules visit <http://assets-p.artcat.com>.

**Lucie Foundation.** “2014 Lucie Foundation Emerging Scholarship Open Call for Submissions.” Deadline: February 28, 2014. For more information, visit [here](http://luciefoundation.org).

**United Photo Industries.** “2014 Fence Photo Contest.” Deadline: April 9, 2014. Fee: \$40 per series of six photographs. Images sought for three outdoor locations in New York City. For full submission information visit [fence.photovillennyc.org](http://fence.photovillennyc.org).

## News

### PROJECT BASHO ANNOUNCES DETAILS OF ONWARD SUMMIT '14

Project Basho has announced the official line-up for the third annual ONWARD *Summit*, which will take place in Philadelphia on February 28 – March 2, 2014.

This year’s event will focus on exploration, featuring hands-on workshops, a panel discussion, and a lecture by Andrew Moore on “The Language of Place: Exploring Our Surroundings Through Photography.”

In addition, Moore and an array of other accomplished artists and curators will be available to offer one-on-one feedback in Portfolio Reviews.

Programming Highlights include:

- **Keynote speaker** Andrew Moore will discuss his work in the context of the *Summit* theme.
- Panelists Vincent Feldman, Justin Maxon, and Kenneth Finkel will explore [why we photograph our surroundings](#).
- Andrew Moore and other artists and curators will be available for one-on-one [Portfolio Reviews](#).
- Celebrated photographic artists will lead a variety of [workshops](#) for photographers of all levels.
- There will be an [exclusive party](#) at a private residence attended by the *Summit* artists and other notable photographers.

[Visit the Summit '14 Site.](#)

### PHILADELPHIA MUSEUM OF ART ACQUIRES THE KEITH L. AND KATHERINE SACHS COLLECTION OF CONTEMPORARY ART

The Philadelphia Museum of Art announced today the acquisition of one of the nation’s leading private collections of contemporary art, formed by Keith L. and Katherine Sachs. Ranging in date from the 1950s to the present, the promised gift of 97 works from the Sachs Collection represents a transformational moment for the institution and its collections. It is exceptional for a concentration of works by American masters Jasper Johns and Ellsworth Kelly, a strong focus on major British and German artists, and important works of outdoor sculpture, large-scale photography, and video art. The couple, closely associated with the Museum for decades, has been collecting art with great dedication for more than forty years, and Keith Sachs has been a Trustee since 1988.



**Constance Mensh:** Keith L. and Katherine Sachs (courtesy of the Philadelphia Museum of Art)

Timothy Rub, the Museum's George D. Widener Director and CEO, said: "The Sachs Collection reinforces and expands the scope of the Museum's holdings of contemporary art and will enable us to present to our audiences a more comprehensive view of the art of the past half century. It brings this institution into the top echelon among encyclopedic museums that collect contemporary art. To find a comparable antecedent in terms of the potential impact of this gift for the Museum's contemporary art collections, one undoubtedly would have to look back to the great collections donated to us by Albert E. Gallatin and Louise and Walter Arensberg in the early 1950s. For this reason we are delighted to celebrate this gift by naming the Museum's suite of galleries devoted to modern and contemporary art The Keith L. and Katherine Sachs Galleries."

The Museum will officially name the galleries in honor of Mr. and Mrs. Sachs in a dedication ceremony scheduled for March 3, 2014. In summer 2016, the Museum will also present a full-scale exhibition devoted to the Sachs Collection, accompanied by a scholarly catalogue, in the Dorrance Galleries.

The Keith L. and Katherine Sachs Collection contains important paintings and sculptures by some of the most influential European and American artists of the last fifty years, among them Robert Gober, Gerhard Richter, Katharina Fritsch, Georg Baselitz, Cy Twombly, Brice Marden, Gabriel Orozco, Joel Shapiro, Howard Hodgkin, Robert Ryman, Joseph Beuys, Sol LeWitt, and Richard Hamilton. The collection includes a wide representation of video art—one of the most fruitful channels of expression for artists working today—by such celebrated figures as Bill Viola, Pierre Huyghe, Steve McQueen, Francis Alÿs, Jennifer Allora and Guillermo Calzadilla, and Willie Doherty. It also features an exceptional group of outdoor sculptures, with major works by Richard Serra, Tony Smith, Richard Long, Scott Burton, and Charles Ray. Among the large-scale photographs in the Sachs Collection are important works by Andreas Gursky, Thomas Struth, Candida Höfer, Jeff Wall, Thomas Ruff, and Clifford Ross.

The collection's strengths in works by Johns and Kelly, pivotal figures in the history of twentieth-century American art, richly complement the two galleries that the Museum has dedicated to these artists for many years. It also includes the first works by other important artists, including Carl Andre, Serra, Baselitz, Smith, and Piero Manzoni, to enter the Museum's collection.

Twelve works from the Sachs Collection have been donated to the Museum as 2013 year-end gifts. Four works from the collection have been placed on view in the Modern and Contemporary Galleries. Among them is Johns's bronze *0-9* (2008) in The Keith L. and Katherine Sachs Gallery (Gallery 171) and *5 Postcards* (oil and encaustic on canvas), a work consisting of five paintings completed by the artist in 2011, which is now exhibited in a museum for the first time in the Anne d'Harnoncourt Gallery (Gallery 182). Kelly's *Cutout in Wood* (1950) has been placed in Gallery 175 in context with the artist's early Paris works. In addition, *Erdtelefon* (Earth Telephone), a mixed-media sculpture by Beuys, can be seen in Gallery 170.

Carlos Basualdo, The Keith L. and Katherine Sachs Senior Curator of Contemporary Art, said: "The collection is remarkable not only because it contains stellar works that reflect some of the most daring and productive directions in contemporary art over the past few decades, but also because it reflects a vision that is deeply personal and grounded in Keith and Kathy's heartfelt affection and admiration for the artists whose work they collect. It is also a testament to the deep and lasting relationship with Philadelphia that has inspired their artistic interests and collecting activities."

## PHOTO INDEPENDENT: ARTIST-ONLY PHOTOGRAPHIC ART FAIR DEBUTS IN HOLLYWOOD, CA, THIS APRIL

PHOTO INDEPENDENT, launching April 24–27 at Raleigh Studios in Hollywood, CA, is the first and only high-visibility platform for independent photographers. An artist-only fair, PHOTO INDEPENDENT is a forum for direct exchange of ideas and contact between photographic artists, collectors, and art professionals. The inaugural edition of the art fair will also feature specialized programs including panel discussions, lectures, roundtables, and docent tours.

Produced by Fabrik Media, an LA-based multifaceted publishing and marketing agency, PHOTO INDEPENDENT's goal — to connect professional and emerging photographic artists with larger global audiences — is in line with the company's overarching mission to support and provide a regional and international network for artists. Scheduled to run concurrently with, and next door to, Paris Photo Los Angeles, PHOTO INDEPENDENT's annual showcase will provide curators, galleries, collectors, editors, and arts enthusiasts the opportunity to discover photographic talent and acquire new works.

"Photo Independent was developed to fill a void in the art fair marketplace," states Chris Davies, President of Fabrik Media, and Founder of PHOTO INDEPENDENT. "Extremely talented photographers were being under-represented within the conventional art fair structure. PHOTO INDEPENDENT provides a valuable platform for these photographers, who don't normally have the opportunity to exhibit within a traditional art fair context. We are proud to be launching the first endeavor of this kind in Los Angeles, a city with a passionate and highly active creative photography community."

Daniell Cornell, Deputy Director for Art and Senior Curator at the Palm Springs Art Museum; curator, photo-historian and artist, Graham Howe; along with fellow curator and gallerist Sarah Lee and Eve Schillo, Collections Manager at the Los Angeles County Museum of Art, will lead the PHOTO INDEPENDENT Selection Committee to ensure that the Fair will serve as a montage of today's diverse photographic landscape.

Photo Independent is currently accepting submissions from fine art photographers worldwide. For more information about Photo Independent, visit [www.photoindependent.com](http://www.photoindependent.com).

Fabrik Media is a Los Angeles-based multifaceted publishing and marketing agency that supports artists and the arts. The Fabrik media platform connects and profiles influential and visionary innovators, features contemporary artists, distinctive galleries, trend-setting designers, discerning architects, and showcases emerging artists. Fabrik covers art and design with its Los Angeles-centric magazine. A quarterly journal of lively coverage and commentary on art and design, Fabrik also provides extensive directories that list local outlets for new forms, ideas, and expressions in diverse media and disciplines. See more at [fabrik.la](http://fabrik.la).

## INSTITUTE OF CONTEMPORARY ART LAUNCHES NEW WEBSITE TO MARK ITS 50TH ANNIVERSARY YEAR

The Institute of Contemporary Art (ICA) at the University of Pennsylvania has announced the launch of its new website, [icaphila.org](http://icaphila.org) — and flexible identity system — that fosters a more accessible, connective, and immersive visitor experience than ever before. Integral to the site is ICA's digitized archive, which will be made available over the course of this, its 50th anniversary year. As a non-collecting institution, ICA's archive is its collection, and the site transforms this repository of history into a vital part of the living fabric of the museum.

### NEW DIRECTOR FOR SF CAMERAWORK

Heather Snider has been appointed the new Executive Director of SF Camerawork. Snider comes to SF Camerawork with a wide range of expertise and experiences in the photography and art community. She has held director positions at Vision Gallery and Scott Nichols Gallery. Recently, her work has been devoted to freelance writing, curating, and consulting on contemporary photography. She is very familiar with SF Camerawork as she served on the Board from 2005 to 2010.

### DONATE YOUR OLD PHOTOGRAPHIC PROCESS BOOKS

Nicolette Bromberg writes, "Because the world has gone digital and from now on people will not know anything about the production of photographs in the pre-digital world, I have started a special photograph library collection here at the University of Washington that will collect books on the processes of photography in the pre-digital world. I have started up the collection with donated books I used to use for teaching photography and a collection of books from another person who had a lot of technical guides. If you know of anyone who might want to get rid of their old books and would consider donating (they can take a tax write-off for it) please pass along my contact information.

"As an example of how this will be helpful to future scholars, I am currently teaching an independent study course in which we are examining identifying 20<sup>th</sup>-century papers, processor marks, etc., to help us date photographs in collections. *The Kodak Darkroom Dataguide* contains paper samples that are quite helpful. The copy I have is published in 1974, so I would love to get copies from other years (or other paper companies)."

You can contact Nicolette, Visual Materials Curator, Special Collections, University of Washington Libraries, at [nxb@uw.edu](mailto:nxb@uw.edu).

### WINTER OLYMPICS ON DISPLAY AT WASHINGTON, D.C.'S NEWSEUM

The Newseum and AFP are partnering once again to provide Newseum visitors with the very best of AFP's photo coverage of the 2014 Winter Olympics in Sochi, Russia. Each day, an AFP photo editor will select images representing the best of the global news agency's daily production of more than 2,000 photographs of the Olympic Games. The AFP photos will be shown in high definition on the massive 40-by-22-foot media screen in the Newseum's atrium from February 6 to 28. The display will be updated regularly to showcase the latest highlights of the Olympic Games. The photos also will be available on the [Newseum's website](#).

AFP will provide comprehensive, real-time coverage of the Sochi Olympics in text, photo, video and graphics. AFP has been on the ground since Sochi was named in 2007 to hold this year's Olympic Games, monitoring preparations for the event and following athletes as they arrive to compete. AFP is sending 70 special envoys of 17 nationalities to cover the games, providing text and video reports in six languages, photos, live reports and more.

### CFEVA'S NEWCOURTLAND ARTIST FELLOWSHIP AWARD

The Center for Emerging Visual Artists (CFEVA), in partnership with NewCourtland, is offering Philadelphia area artists the opportunity to participate in a community-based fellowship (Deadline: March 15, 2014). Through the NewCourtland Artist Fellowship, visual artists will be selected to bring innovative and engaging art-making to seniors in sites throughout Philadelphia. In order to apply, artists are asked to develop an intergenerational project that brings members of NewCourtland together with school age

children/teens to create a meaningful experience and a high quality artistic project. Work created by seniors and their school-aged partners during the 2014 Fellowship Program will be exhibited with the work of the artist fellows in a large, well publicized exhibition entitled "Art is Ageless 2015." Once artists receive this award they will be responsible for conducting ten 1.5 hour workshops, attending several preliminary and post-workshop meetings, attending one sensitivity training session, and participating in the Art is Ageless exhibition in Spring 2014. Artists will also be separately compensated for purchasing all necessary art supplies and professionally presenting the artwork created in their program for the final exhibition. To apply to the 2014 NewCourtland Fellowship please visit <https://cfeva.slideroom.com/> and follow the application instructions. For more details or to discuss your application please contact Genevieve Coutroubis at 215/546-7775 x11 or [Genevieve@cfeva.org](mailto:Genevieve@cfeva.org).

### DAGUERREIAN SOCIETY CALL FOR ORIGINAL PAPERS

The Daguerreian Society seeks original papers that address and advance the understanding and appreciation of the photographic history of the Daguerreian era (ca. 1830–1870) in relation to the art, history, collection and practice of the daguerreotype, as well as the history and social impact of other photographic processes of this period. Authors are responsible for rights and releases of images used as illustrations, and grant permission for publication and for future electronic access. Papers of up to 30 pages (8,000 words) are requested for peer review by Daguerreian expert Keith Davis, Senior Curator of Photography at the Nelson Atkins Museum, and the publication committee. The winners will be published in the *Daguerreian Society Annual*. Timeline: Submission of a 300-word abstract by March 1, 2014; Review and notification by April 1, 2014; Submission of completed manuscript with illustrations by June 1, 2014; Review process and notification of selection by July 15, 2014. The Society will recognize the best submission as selected by the review committee with a \$1,000 award, and the best graduate student or new author submission with a \$500 award. Each will receive complimentary registration to the 2014 Daguerreian Society Symposium in Austin Texas. The Daguerreian Society, P.O. Box #306 Cecil, PA 15321-0306, 412/221-0306, [info@daguerre.org](mailto:info@daguerre.org), [www.daguerre.org](http://www.daguerre.org).

### 92ND STREET Y PRESENTS "VIETNAM: DEFINING IMAGES"

On Thursday, February 27, Pete Hamill, Peter Arnett, and Kimberly Dozier will discuss Images that Defined the Vietnam War from the Critically Acclaimed Book *Vietnam: The Real War; A Photographic History by the Associated Press* (Abrams) at 8:15 p.m., at the 92nd Street Y, Bottenweiser Hall, Lexington Avenue at 92nd Street, New York, NY. Order tickets [here](#).

These are images that tell the story of the war that left a deep and lasting impression on American life. From Malcolm Browne's photograph of the burning monk to Nick Ut's picture of a nine-year-old running from a napalm attack to Eddie Adams's photograph of the execution of a Viet Cong prisoner, this book contains the pictures that both recorded and made history.

Books will be on sale and available for signing during the event: 304 pages, 300 color and black-and-white photographs, \$40.00 hardcover.

"Art in the First Person: 27 Talks with Artists, Curators, Scholars, and Writers," Spring 2014. An ongoing series of dialogues with important members of the art world. School of Visual Arts Gallery, 209 E. 23rd St., NY, NY 10010, 212/592-2010, [www.sva.edu/events](http://www.sva.edu/events).

### VIEWERS BRAVE COLD FOR RIT'S BIG SHOT PHOTO

Snow and cold temperatures didn't keep hundreds of people from descending on downtown Rochester to light up High Falls Sunday night and help make Rochester Institute of Technology's 29th Big Shot photograph a wintertime success. More than 600 volunteers, including nearly 100 RIT students and 150 alumni provided the primary light source for the Big Shot image while RIT photographers shot an extended exposure of one of Rochester's natural and iconic spectacles.

### EVENTS / LECTURES / ITEMS OF INTEREST / GRANTS

On Wednesday, February 19, from 5 to 6 p.m., Gary Saretzky discusses *12 Million Black Voices: A Folk History of the Negro in the United States*, and the golden age of documentary photography. In 1941, Richard Wright collaborated with photo-director Edwin Rosskam to produce *12 Million Black Voices: A Folk History of the Negro in the United States*. The combination of Wright's prose with photos from the Farm Security Administration files narrates a history of African-American life that feels very much like a documentary film. Monmouth County Connection, 3544 State Highway 66, Neptune, NJ 07753.

The Southern Alleghenies Museum of Art at Altoona will host a Lunch a l'Art program with photographer Robert Wedge on Wednesday, February 19. The program, which begins at noon, includes lunch and a presentation by the artist. Cost is \$15 per person or \$14 for SAMA members. Reservations are required by calling 814/946-4464. Southern Alleghenies Museum of Art at Altoona, 1210 Eleventh Ave., Altoona, PA 16601.

The PhotoAlliance's 8th Annual National Portfolio Review will be held March 14–16, 2014 in San Francisco. The application deadline is February 24. For a complete application and submission information go to: [www.photoalliance.org](http://www.photoalliance.org).

"Special Exhibition Panel: Place and Photography (60 E)," Sunday, March 16, 2014, 3–4:30 p.m. Edgar N. Putman Event Pavilion at the Michener Art Museum in Doylestown, PA. \$10 per member/\$20 per non-member/\$5 per student with valid ID, includes museum admission. Advance registration required: [www.michenerartmuseum.org](http://www.michenerartmuseum.org). Call for student discount ticket: 215/340-9800.

PPAC Book Fair, March 29–30, 12–6 p.m. Philadelphia Photo Arts Center, 1400 N. American St., Ste. 103, Philadelphia, PA 19122, 215/232-5678, [www.philaphotoarts.org](http://www.philaphotoarts.org).

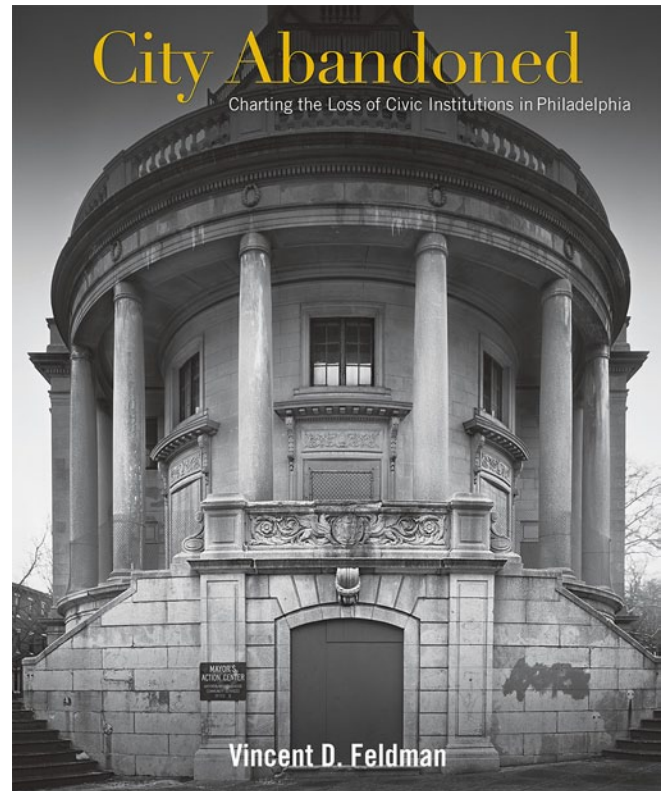
"What it Means To Be Seen: Photography and Queer Visibility" and "Zanele Muholi: Faces and Phases" will be on view at the Ryerson Image Centre 33 Gould St., Toronto, Ontario, Canada from June 18 to August 24. For more information, visit [www.ryerson.ca](http://www.ryerson.ca).

New York City's Department of Transportation and United Photo Industries curate a new exhibit in display cases in Lower Manhattan, Staten Island, Bronx, Brooklyn, and Queens. For more information on locations visit [madmimi.com](http://madmimi.com).

Momentage, a state-of-the-art photo-sharing app is available with iPhone and iPad technology. The app gives users the chance to fully make use of Apple's advanced camera settings such as improved sensors and image stabilization. Users can instantly edit and share images. For more info on the Momentage app and community visit [Momentage.com](http://Momentage.com).

### BOOK LAUNCHES AT THE PRINT CENTER

The Print Center announces the launch of its newest publication, *The Picture that Remains* on Tuesday, February 25, 2014, at 5:30 p.m. *The Picture that Remains*: Hardbound, 64 page volume, featuring 38 quadtone plates, \$35.00. Photographs by Will Brown, Poems by Thomas Devaney, Introduction by Vincent Katz. The Print Center, 1614 Latimer Street, Philadelphia, PA 19103, 215/735-6090, [www.printcenter.org](http://www.printcenter.org).



There also will be a book release party for Vincent Feldman's long-awaited first monograph, *City Abandoned: Charting the Loss of Civic Institutions in Philadelphia*, at The Print Center on Wednesday, March 5, from 5:30 to 7 p.m. Published by Paul Dry Books, the monograph is 147 pages with 100 illustrations, a foreword by John Andrew Gallery, a preface by Kenneth Finkel, and an introduction by Feldman — all for \$29.95.

### THE BIG PHOTO SHOW RETURNS TO LA: FREE REGISTRATION TO 10 PHOTO REVIEW SUBSCRIBERS

The Big Photo Show is returning to Los Angeles May 17–18. This year, there will be more classes taught by leading photography educators at both beginner and advanced levels. There will be many more exhibitors; lots of live model shooting zones with tips and advice from top pros; and displays. Discover more at [www.thebigphotoshow.com](http://www.thebigphotoshow.com).

An Early Bird registration rate of \$10 is available through March 31. After that, registration goes up to its full price of \$25. However, the first 10 Photo Review subscribers to register with the code "PhotoReview" at [thebigphotoshow2014.eventbrite.com/?aff=PhotoReview](http://thebigphotoshow2014.eventbrite.com/?aff=PhotoReview) will get free registration.

## CATALOGUES AND PUBLICATIONS

### CATALOGUES AND PUBLICATIONS

The **List Gallery** of Swarthmore College has published a beautiful small catalogue — *Andrew Moore: East/West*, with an essay by gallery director Andrea Packard — in conjunction with the exhibition at the gallery through February 26. It's available for \$10. You can order it by sending a check made out to the Swarthmore College Department of Art, c/o List Gallery, 500 College Avenue, Swarthmore, PA 19081.

*Hawk/Dove* is **Bea Nettles**'s latest book. She writes: "Recently I have photographed the last names of veterans in national cemeteries. My latest book is a dos-a-dos (a reversible book telling two stories) that contains poems about war & peace written with these names. The text mirrors itself in places, including contrasting images of real battles (war) and pillow battles (peace).

There are two versions of the book. The limited edition version is cloth bound with the title HAWK on one side, and DOVE (reversed) on the other side. The book is a four-fold accordion digitally printed on cotton rag paper and it is housed in a copper paper wrap. 12 copies 5.25x9.5" opening to 5.25x38". The open edition version is the same size bound in grey museum board and contained in a white paper wrap. Email me for price and availability at [bea@beanettles.com](mailto:bea@beanettles.com).

Catalogue - *Arrangements* by **Marie Cosindas** - essay by Lisa Hostetler - \$30 - published by the **Bruce Silverstein Gallery**, 535 West 24th Street, New York, NY 10011, (212) 627-3930, in conjunction with the exhibition, January 16 – March 8, 2014 – for further information, contact Meredith Rockwell at [Meredith@bruceilverstein.com](mailto:Meredith@bruceilverstein.com).

Iconic American photographer **George Tice** has completed his most recent fine art volume. The resulting book, entitled *Seldom Seen*, is a 128-page legacy piece featuring 100 images that, until now, have never been published.

As a large-format photographer, George Tice has received international acclaim for his landscape work and is considered one of the great photographers of the 20th century. Remaining loyal to film and printing in the darkroom, George's work continues to garner attention from museums and collectors worldwide. A team from Brilliant recently sat down with George to talk about this collaboration and how advancements in printing technology along with the craftsmanship at Brilliant, allowed his latest book, *Seldom Seen* to become "the epitome of what can be done."

Order your copy of *Seldom Seen* at [www.Brilliant-Press.com](http://www.Brilliant-Press.com). George discusses the book-making process at [www.youtube.com/watch?v=XkiyPAr5D0c&feature=youtu.be](http://www.youtube.com/watch?v=XkiyPAr5D0c&feature=youtu.be).

**Dr. Mike Ware** writes, "The first monograph on *Cyanotype* was published by the Science Museum of London in 1999, but has long been totally out of print, and only accessible as a digitized part-version online at Google Books. My book was devoted to the study of photographic printing in Prussian blue, engaging with its history, aesthetics, practice, conservation and chemistry. Now, in response to kind requests, I have substantially restructured this text in a revised and extended edition that I intend to make freely available as a download from the World Wide Web as a 5.3 MB pdf: <http://bit.ly/1fnRJMx>.

"For the time being, it will remain largely unillustrated. With its 700+ references to the literature and the WWW, my hope is that it may occasionally serve as a useful resource for historians, curators and conservators of photographs, and for students of iron-based analogue imaging (siderotype) — should any of these good folk ever find themselves as castaways upon the strange blue shores of cyanotype. For those other shipwrecked mariners — photographic artists exploring cyanotype printmaking as an expressive medium — I have included full practical instruction in the modern process.



For more than 30 years, New York-based photographer and painter **Mariette Pathy Allen** has been documenting transgender culture worldwide; in 2004 she won the Lambda Literary Award for her monograph *The Gender Frontier*. In her new publication, *TransCuba*, Allen focuses on the transgender community of Cuba, especially its growing visibility and acceptance in a country whose government is transitioning into a more relaxed model of communism under Raúl Castro's presidency. This publication therefore records a cultural watershed within Cuba. In addition to color photographs and interviews by Allen, the book also includes a contribution from Raúl Castro's daughter, Mariela Castro, who is the director of the Cuban National Center for Sex Education in Havana. In 2005, Castro proposed a project, which became law three years later, to allow transgender individuals to receive sex reassignment surgery and change their legal gender. With text by Mariela Castro, Allen Frame, Wendy Watriss, the book is \$45 and available from [Daylight Books](http://Daylight Books).

Many **Getty Museum** publications were recently released online. Among books in painting, sculpture, prints, and conservation, among other subjects, photography books now online for download include *Antiquity & Photography*, *The Silver Canvas*, *Disciples of Light*, *Whisper of the Muse*, *Walker Evans: Catalogue of the Collection*, and many more. Visit [www.getty.edu/publications/virtuallibrary](http://www.getty.edu/publications/virtuallibrary).

The Australian magazine **Silvershotz** is making the transition to a digital format. Check out the video on their home page: [www.silvershotz.com](http://www.silvershotz.com).

### LIMITED EDITIONS

**Elisabeth Sunday** is offering an open edition of her *Anima* and *Animus* images in a new smaller size. (Click [here](#) to see images from both series.) These archival pigment prints are 24"x14" with a 1" border and are selling for \$1,100 each. Contact Corden|Potts Gallery, 49 Geary Street, Suite 410, San Francisco CA 94108 415/781-0110, [info@cordenpottsgallery.com](mailto:info@cordenpottsgallery.com), if you're interested in the images from either of these series.

### AWARDS

Educator and an artist Alesandra Zsiba won the fourth quarter 2013 of the ongoing JGS Photography Contest. While in residence at Roger Williams Middle School (Providence, RI) as a full-time arts integration educator, she designed a yearlong curriculum in documentary storytelling and project-based literacy learning entitled "The Identity Project." Each piece documents a collaboration between herself as the photographer and her students as the poets and designers. Her layered work presents a unique combination of collaborative artistic expression, and creative personal storytelling. Check it out at [forwardthinkingmuseum.com/solo\\_zsiba\\_00.php](http://forwardthinkingmuseum.com/solo_zsiba_00.php).

## FESTIVALS / CONFERENCES / SYMPOSIUMS

### FESTIVALS / CONFERENCES / SYMPOSIUMS

The 2014 SPE National Conference — “Collaborative Exchanges: Photography in Dialogue” — will be held in Baltimore, MD, from March 6 to 9. Featured speakers are Joan Fontcuberta, Zoe Strauss, Nicholas Kahn & Richard Selesnick, and Catherine Lord, and the Honored Educator is Susan kae Grant. See [www.spenational.org/conference](http://www.spenational.org/conference) for further information.

“2014 f295 Symposium: Photography Beyond Technique,” May 29 – June 1, 2014. This year’s f295 symposium takes place in Pittsburgh, PA. Saturday and Sunday workshops will be held at Pittsburgh Filmmakers. For more information visit [www.f295.org](http://www.f295.org).

“Striking Resemblance: The Changing Art of Portraiture,” March 7–8, 2014. Speaker: Dr. Eric R. Kandel. A symposium at Jane Voorhees Zimmerli Art Museum, Rutgers State University, 71 Hamilton St., New Brunswick, NJ 08901, 732/932-7237, [www.zimmerlimuseum.rutgers.edu](http://www.zimmerlimuseum.rutgers.edu). Advance registration required by February 27. For program details, including speakers, topics, and registration, visit [bit.ly/SRSympo](http://bit.ly/SRSympo). For assistance, call the education office at 848/932-6766.

## KUDOS

**Thomas Brummett** writes, “Here is some great news. [My Light Projections](#) Series made the final 3 in the very prestigious [World Photography Awards](#) 2014! (The 30 world finalists are flown to the London Awards Ceremony all expenses paid).”

Among the new trustees at The Philadelphia Museum of Art is **Andrea M. Baldeck**. Dr. Baldeck is a physician, musician, and — best known to us — a photographer.

**Rita Bernstein** and **Leah Macdonald** are two of the photographers included in [Diffusion](#) at VERVE Gallery in Santa Fe, NM, through April 26.



**Len Speier:** *B&H, 53d Street Wall*, at Calumet Gallery, New York City

**Len Speier** had an exhibition at the Calumet Gallery in New York City from February 1–15.

**Laurence Miller Gallery** is celebrating its Thirtieth Anniversary with an exhibition February 6 – April 26. The complete exhibition will be posted on their website at [www.laurencemillergallery.com](http://www.laurencemillergallery.com). The Laurence Miller Gallery is located at 20 West 57<sup>th</sup> Street, Third Floor, New York, NY 10019. Gallery Hours are Tuesday–Saturday 11–5:30. For further information, [info@laurencemillergallery.com](mailto:info@laurencemillergallery.com) or (212) 397-3930.



**Carl Corey:** *3641 — Tom and Dino Christ — Nick's Restaurant — Madison, Wisconsin, 2011/2013, 35"x35"*, ed. 20, acquired by the Madison Museum of Contemporary Art

The Madison (WI) Museum of Contemporary Art has acquired **Carl Corey**'s print of *3641 – Tom and Constantine Christ* from the *For Love and Money* series for their permanent collection. His new book, *For Love and Money*, will be released in March. You can see more about it here: [www.facebook.com/pages/For-Love-and-Money/239543449561469](http://www.facebook.com/pages/For-Love-and-Money/239543449561469). In addition, the following public talks, presentations, and exhibits are coming up:

- Fox Cities Book Fair – Featured speaker, includes *Tavern League* and *For Love and Money* presentation – April 12, 2014
- Museum of Wisconsin Art – *For Love and Money* – opening April 24, 2014
- Museum of Wisconsin Art – *For Love and Money* – morning lecture and book signing – April 25, 2014
- *This is How to Make a Book* – One Day Seminar May, 2014 – sponsored by [CoPA Milwaukee](#).

**Rania Matar**'s exhibition of work from the Middle East — “[Deserted Spaces and Ordinary People](#)” — will be on view at the Bank of America Center, 700 Louisiana Street, in Houston, TX, through April 28.

Juror Diana Daniels, Curator of Contemporary Work at the Crocker Collection, awarded **George Grubb** first place in the “2014 Juried Exhibition” at the Center for Photographic Art in Carmel, California. Mr. Grubb was also named a Finalist at the 2014 Eco-Arts Awards, juried by Bruce Helander, Nona Donoho, Maria Epes, and Clarissa Sligh, in Asheville, North Carolina.

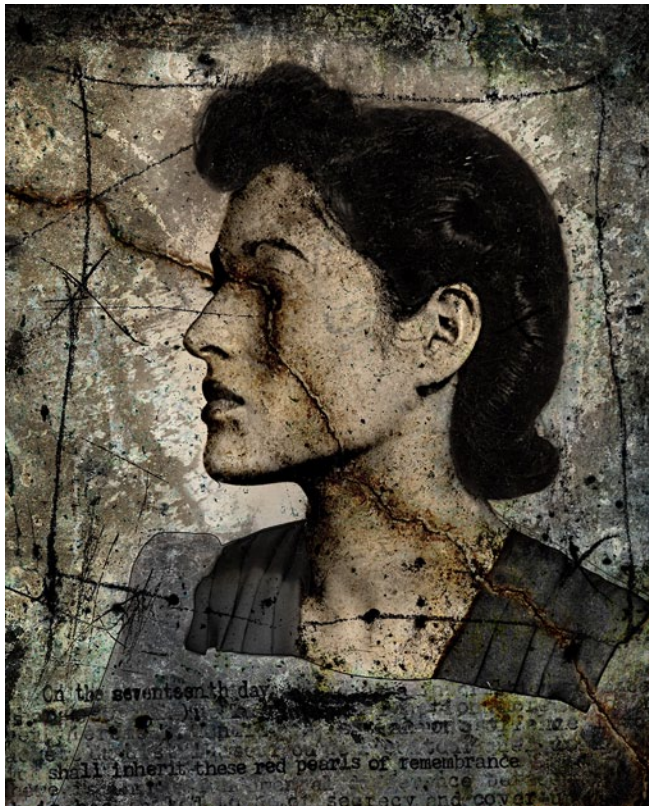
**Thomas Kellner**'s exhibition “Genius Loci — Two German Gentlemen in the Land of the Tsars,” honoring Yekaterinburg's 290th anniversary, will be on view at Art Galerie Siegen in Siegen, Germany, through March 1.

**Soo Kim** has been awarded the 2013 John Gutmann Photography Fellowship by the San Francisco Foundation.

**Miska Draskowsky**'s “Gowanus Wild” opened at The Vermont Center for Photography on February 7.

**Anthony Almeida** has work appearing in the “35th Annual Juried Art Exhibition” at the Monmouth Museum through March 9.





**Frank Rodick:** *Portrait, Frances Rodick (Red Pearls)*, 2012, at the Fort Wayne Art Museum

**Frank Rodick** has a show opening at Kirk Hopper Fine Arts in Dallas, TX, on March 8th entitled *Frank Rodick: Faces, Flesh, and Other Hallucinations*. It runs until April 12th. He also has work in the Fort Wayne (IN) Art Museum's inaugural bicentennial exhibition, *The National: Best Contemporary Photography 2014*, which opens March 29th. Also, AkinaBooks is doing a small limited second edition printing of his book (with a different cover and a different edit from the first), calling this one simply *Liquid Cities* **Joshua Lanzara** writes, "I recently put up a new website with my work [www.joshualanzara.com](http://www.joshualanzara.com), and will be adding more to it in the near future as I scan my old film." His series *Fallen Angels: The Streetwalkers of Philadelphia's Skid Row* at [www.joshualanzara.com/prostitutes](http://www.joshualanzara.com/prostitutes) is a tough look at a population marginalized by polite society.

**Bill Rauhauser** of Detroit and Southfield, Michigan, was awarded the \$50,000 Eminent Artist Award by the Kresge Foundation: [Bill-Rauhauser-Kresge-Eminent-Artist](http://Bill-Rauhauser-Kresge-Eminent-Artist).

Rauhauser, whose work was featured in Volume 29, Number 3 of *The Photo Review*, is Professor Emeritus of the College of Creative Studies in Detroit, where he taught most classes in the photography curriculum, including History of Photography. Now 95, Bill's photograph of a soldier and two women on a park bench at the Detroit River was included in Edward Steichen's "Family of Man" exhibit at the Museum of Modern Art in the mid-1950s. The catalog of that exhibit is still in print.

Rauhauser still photographs every day and always has at least two book projects in mind. He is active in several organizations, including the Detroit Institute of Arts and the Michigan Photographic Historical Society.

**Jerry Uelsmann** and **Maggie Taylor** have work appearing in the Baldwin Photographic Gallery at Middle Tennessee University through March 9.



**Sandra Chen Weinstein:** *Woman of Nablus*

**Sandra Chen Weinstein's** exhibition "Women of Arab Spring" will be seen at three venues in conjunction with FotoFest Biennial 2014, Houston, TX, in March and April.

- Houston Club, 910 Louisiana Street One Shell Plaza, Suite 4900 Houston, TX 77002, 713/225-3257, [www.clubcorp.com/Clubs/The-Houston-Club](http://www.clubcorp.com/Clubs/The-Houston-Club), M-F 8-5, March 15 - April 27; Reception: TBD.
- Chinelli La Fratta Art Gallery, 1813 Crockett Street, Houston, TX 77007, 713/869-2727, [www.jeanettechinelli.com/jeanettechinelli/exhibitions.html](http://www.jeanettechinelli.com/jeanettechinelli/exhibitions.html), T-Th 10-6, F-Sat 11-8, March 15 - April 5; Reception: March 22, 6-9 PM.
- Houston Public Library, Central Library, 500 McKinney, Houston, TX 77002, 832-393-1313, [www.houstonlibrary.org](http://www.houstonlibrary.org), March 18 - April 29.

She also was a finalist for "Emerging Focus @ photo LA," had eight "Honorable Mention Pro Awards at the "International Photography Awards (IPA), and also had images chosen at "American Photography 29 AI-AP."

**Leah Macdonald** has work appearing at the Verve Gallery of Photography in Santa Fe through April 26.

The International Loupe Awards 2014 Open & Amateur Award Winners are **Mark Carter** from New Zealand (Open Award) and **Lori Cicchini** from Australia (Amateur Award). Carter receives a prize pool that includes \$15,000 in cash and a VIP trip to the 2014 Creative Asia Imaging Expo in Hong Kong; Lori Cicchini receives photographic equipment.

**Roger Matsumoto's** palladium print, *Stereo Pair: Amanita*, has been selected for addition to the permanent collection of the Philadelphia Museum of Art. This print will be included in the "Photography 33" exhibit at the Perkins Center for the Arts, 395 Kings Highway, Moorestown, NJ, through March 29.

**Andreas Rentsch's** new video, "The Wanderer," is appearing as a part of "Stories in the Social Landscape" at ICP's Hillman Gallery through March 16.

**Builder Levy's** work and new book *Appalachia USA* were featured on [The New York Times Lens blog](http://The New York Times Lens blog) on January 15.

**Mary Virginia Swanson** was the recipient of Griffin Museum's 2013 FOCUS Award for Lifetime Achievement in Photography.

## KUDOS continued

**David Maitland** was a category winner in the Natural History Museum's "Wildlife Photographer of the Year" competition.

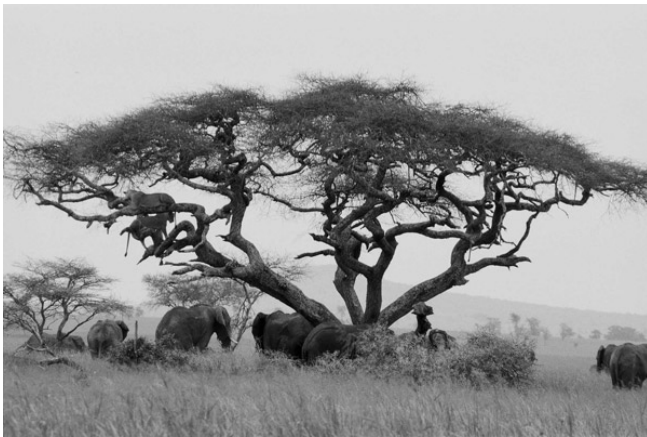


**France Scully Osterman and Mark Osterman:** From "Sun Sketches at the Twilight of Photography," at Tilt Gallery, Scottsdale, AZ

**Mark Osterman and France Scully Osterman's** exhibition "Sun Sketches at the Twilight of Photography" comprising "Sun Traps in the Arizona Desert" and "The Light at Lacock" — utilizing the photogenic drawing process — will be on view at [Tilt Gallery](#) in Scottsdale, AZ, through March 1.

**Timothy H. McCoy's** exhibition "Sanctuary" is on view at Cochenour Art Gallery, Georgetown College, 400 East College Street, Georgetown, KY 40324, [www.georgetowncollege.edu/galleries/cochenour-gallery](http://www.georgetowncollege.edu/galleries/cochenour-gallery), from February 21 to March 28. The Opening Reception and Gallery Talk is February 21 from 12 p.m. to 2 p.m. The images are from the photographer's palladium-on-translucent-vellum portfolio.

## HELP SAVE AFRICAN WILDLIFE



**Cyril Christo and Marie Wilkinson:** African scene: elephants and lions

Cyril Christo and Marie Wilkinson are raising money to fund a new conservation documentary. You can read about their work here: [news.mongabay.com/2014/0129-thoumi-christo-wilkinson-interview.html](http://news.mongabay.com/2014/0129-thoumi-christo-wilkinson-interview.html) and visit their website here: [www.christoandwilkinsonphotography.com](http://www.christoandwilkinsonphotography.com).

## BENEFIT AUCTIONS / FUNDRAISERS

"Select 2014: WPA Art Auction," Saturday, March 22, 2014. The 33rd anniversary of the organization's highly-regarded art gala includes a curated silent auction of more than 150 art works by top contemporary artists, delicious dinner, open bar, desserts, and DJ-fueled party with artist-designed piñatas. [Tickets](#) to the auction gala start at \$325 and can be purchased by visiting the [WPA website](#) or contacting Mary Resing at [mresing@wpadc.org](mailto:mresing@wpadc.org) or 202/234-7103 x5. New this year, WPA will be offering a \$150 party ticket for guests age 35 and under with admission at 9 p.m. Bidding on artwork will commence the night of the gala. For information on [bidding in absentia](#), please visit the WPA website or contact Mary Resing, Washington Project for the Arts, 2023 Massachusetts Ave., NW, Washington, DC 20038, 202/234-7103, [www.wpadc.org](http://www.wpadc.org).

## WORKSHOPS / RESIDENCES / TRAVEL / EDUCATION

**Steve Weinrebe**, Director, Imaging R & R (formerly Princeton Workshops), writes: "I have listed a late winter/early spring photography workshop series that includes late-March to early-April dates for four-hour Beginner Digital Photography workshops at Barnegat Light, NJ. Those workshops were well received last Fall, and turned out to be great fun and lots of learning for the participants.

"I'm also offering one three-day workshop in Barnegat Light (Friday evening to Sunday evening) that will combine beginner to intermediate photography techniques with Photoshop and Lightroom download and editing.

"All the above can be seen at [workshops.ImagingRandR.com](http://workshops.ImagingRandR.com)."

Steve is the author of *Irreverent Photo Tools for Digital Photographer* and *Adobe Photoshop & the Art of Photography*. You can reach him at 856/222-9696 or [training@imagingrandr.com](mailto:training@imagingrandr.com).

"Peru: Monumental And Spiritual: Cusco During Semana Santa and Machu Picchu," April 12–20, 2014. Instructors: **Harvey Stein & Adam L. Weintraub**. Workshop fee: \$2950-\$3250, depending on enrollment. To register email Adam L Weintraub at [register@photoexperience.net](mailto:register@photoexperience.net) or call 206/817-4686.

**Christopher Matthew's** Abandoned America workshops Spring calendar is now available. Visit <http://us6.campaign-archive1.com>.

**Columbia University School of the Arts** (2960 Broadway, New York, NY 10027) is presenting an [Advanced Photography Intensive: New York](#), May 27–July 3. Instructors are Professor Thomas Roma, Adjunct Faculty Yola Monakhov, and Adjunct Faculty Corey Riddell. The Advanced Photography Intensive engages students in all elements of photographic practice and the development of a portfolio. A combination of technical tutorials, individual meetings with internationally renowned artists and art professionals (Thomas Roma, John Pilson, Elinor Carucci, Michael Spano, Susan Kismaric, and Vince Aletti), as well as a series of seminars and group critiques, provide students with the tools they need to advance professionally and further develop the core elements of their practice. The Advanced Photography Intensive provides an exceptional workshop environment where students have 24-hour access to traditional and digital facilities, coupled with daily hands-on assistance from experienced faculty and staff, culminating in a group exhibition at the LeRoy Neiman Gallery. Students are expected to produce work independently throughout the six-week term and fully dedicate their time and efforts to the course. Visit the [Columbia Summer Arts website](#) to find out more about all Visual Arts offerings. Email inquiries to [soasummer@columbia.edu](mailto:soasummer@columbia.edu).

## WORKSHOPS continued

The **Harrisburg Camera Club** will hold its 4th Annual “Light and Creativity” Workshop on Saturday April 5, at the Central Penn College Conference Center in Summerdale, near Harrisburg, PA. The guest speakers are “Canon Explorer of Light” photographer Lewis Kemper and photographer Leo H. Lubow. The conference runs from 9–5 and is limited to 175 participants. For more information go to [www.harrisburgcameraclub.org/2014lcworkshop](http://www.harrisburgcameraclub.org/2014lcworkshop).

“Self Portraiture Workshop” with **Linda Troeller**, June 6–8, 2014. Self-Portraiture builds an understanding of where we are in life and where we can go in the future. This workshop is designed to take participants to another level through exploration with a mirror, role-playing and creating narrative fantasies. Snapping the shutter on oneself daily during the workshop, students can discover how their camera can serve as reassurance for their psyche, dramatize their fears and joys and find new ideas for other photography directions. Linda Troeller has been published by Aperture with her Pictures of the Year award winning book, *Healing Waters* and by Scalo, Switzerland for her book, *Erotic Lives of Women*, which was exhibited at Fotohof, Austria. Tuition: \$385 (tuition includes lunch during workshop) Studio/Materials Fee: \$30. Location: Peters Valley School of Craft, 19 Kuhn Rd., Layton, NJ 07851, [www.petersvalley.org](http://www.petersvalley.org).

**School of Visual Arts** “Shanghai Photography Workshop,” June 7 – July 5, 2014. Spend four weeks—and get four studio credits—in a workshop that provides the opportunity and sufficient time to work on projects in depth as well share ideas and forge relationships with Shanghai’s photographers, curators and gallery owners. Classes are scheduled Monday to Thursday and participants will have the opportunity and freedom to gain a deeper understanding of art practices and photographic content, form, color, context, taste, and limits. Prerequisites: One year of photography education. The program is open to students 18 years or older, as well as college graduates and professionals. For more information and to apply online visit the [Arts Abroad website](http://Arts Abroad website) or contact Kimberlee Venable at [kvenable@sva.edu](mailto:kvenable@sva.edu).

**Peter Turnley** is leading photography workshop to Cuba on April 5–11, 2014. If you’re interested visit [www.peterturnley.com/workshops](http://www.peterturnley.com/workshops).

**David Simchock** is leading a photo tour and workshop to Ecuador, June 18–23, 2014. For full information visit [vagabondvistas.com](http://vagabondvistas.com).

**PROJECT BASHO**, 1305 Germantown Ave., Philadelphia, PA 19122, 215/238-0928, [www.projectbasho.org](http://www.projectbasho.org), find a complete class schedule [here](#).

In addition to various classes, Project Basho is holding four workshops in conjunction with its Onward Summit.

Sunday, February 23, 10–5  
[Introduction to Flash](#), Alex Orgera

Sunday, March 2, 10–5  
[The Cultural Landscape](#), Lois Conner

Sunday, March 2, 10–5  
[Environmental Portraiture: Person And Place](#), Greg Miller

Sunday, March 2, 2–5  
[Through the Lens: The Culture Of Chinatown](#), Niko J. Kallianiotis

**PHILADELPHIA PHOTO ARTS CENTER**, 120 N. 3rd St., Philadelphia, PA 19122, 215/232-5678, [www.philaphotoarts.org](http://www.philaphotoarts.org):

**Flash Photo** Monday, March 10th, 6:30 p.m. – 9:30 p.m.  
Instructor: Anthony Wood.

**Photoshop Basics** Saturday, March 15th, 10 a.m. – 4 p.m.  
Instructor: Jordan Baumgarten.

**PHOTOWORKS** has 12 new photography classes and two new workshops. Check them out at [www.glenechophotoworks.org](http://www.glenechophotoworks.org). PHOTOWORKS, 7300 MacArthur Boulevard, Glen Echo, MD 20812, registrar: 301/634-2226.

## UNIVERSITY OF THE ARTS: 2014 PARADIGM LECTURE SERIES

Thursday, February 20

Gail Buckland, Connelly Lecture Hall, 1:00 p.m.

Thursday February 27

William Hunt, Connelly Lecture Hall, 1:00 p.m.

University of the Arts, Terra Hall, Connelly Lecture Hall, 8th fl., 211 S. Broad St., Philadelphia, PA 19107. Lectures are free and open to the public. For more information call 215/717-6300 or visit [www.uarts.edu](http://www.uarts.edu).

**ESPACE PHOTOGRAPHIQUE ARTHUR BATUT** is presenting two photo workshops exploring two significant historical processes.

June 27, 28, 29, 2014 - Tintype Workshop  
Presented by Daniel Ballesteros.

July 4, 5, 6, 2014 - Ziatype Workshop  
Presented by Kevin Martini-Fuller.

Workshops will be held at the Espace Photographique Arthur Batut in the quaint and historic commune of Labruguiere, France. Contact Kevin Martini-Fuller at 610/675-5128 or [kmartini.foto@gmail.com](mailto:kmartini.foto@gmail.com) for further information and reservations.

---

## PHOTO REVIEW LISTING DEADLINES

While *The Photo Review Newsletter* has the most complete listing of photography exhibitions of any periodical throughout the Mid-Atlantic region, there are still some shows that do not get listed because notice of them does not reach us in time. For photographers and presenters of photography shows, following is a schedule of listing due dates.

Due Date	For Exhibitions & Events Occuring Between
3/29/14	4/7/14 and 5/18/14
5/10/14	5/19/14 and 7/6/14
6/28/14	7/7/14 and 8/31/14

---

## PRISON OBSCURA AT HAVERFORD COLLEGE

*Prison Obscura*, curated by Pete Brook and appearing at Haverford College's Cantor Fitzgerald Gallery through March 7, is a powerful and unflinching look at the system of incarceration in the United States.

From the essay: "*Prison Obscura* considers this fundamental distortion that characterizes vision and viewing, how we see and don't see the people we incarcerate, the people we put in boxes. Guiding the viewer through the visual culture of America's prisons, the exhibit traces the contours of that box, to attempt to make sense of the dominant narratives and stereotypes that somehow justify a U.S. system now locking up people at an unprecedented rate. What do we know of our prisons? Do photographs help us know? Are the images of prisons we see reliable? Are they even useful? How do images relate to the political, social, and economic realities that exist within our prison industrial complex? Do prisons, as closed sites, present any challenges to the claims photography makes as a medium of communication?"

You can read the essay here: [exhibits.haverford.edu/prisonobscura/essay](http://exhibits.haverford.edu/prisonobscura/essay). You can also read the review by Rachel Heidenry on [theartblog](#).



At the entrance to "Prison Obscura" at the Cantor Fitzgerald Gallery.



Alyse Emdur photographs the visiting rooms at prisons where painted backdrops serve as backgrounds for photographs of inmates.



In *Take A Picture, Tell A Story*, Robert Gumpert makes a portrait of a prisoner and gives them four prints in exchange for a story. On the right a rapt viewer watches the images and listens to the raw, unedited stories.



Kristen S. Wilkins's series *Supplication* pairs respectful portraits of female inmates with photographs of scenes they miss seeing.



From the essay: "When Justice Kennedy included three photographs of California prisons in the appendix of the majority ruling of *Brown v. Plata* (May 2011), there was widespread consternation. Protestors proclaimed the photographs of holding cages and overcrowded living quarters too imprecise and emotional to have any place in a high profile legal case.

"*Brown v. Plata* was a class action lawsuit brought by prisoners against the State of California. Ultimately, the US Supreme Court ruled that prison overcrowding had resulted in inadequate healthcare and preventable deaths. As a result, every one of California's 160,000 prisoners was recognized as suffering cruel and unusual detention in violation of 8th Amendment rights. Prior to *Brown v. Plata*, the Golden State warehoused the largest prison population of any state, an ignominious distinction California held for 25 years.

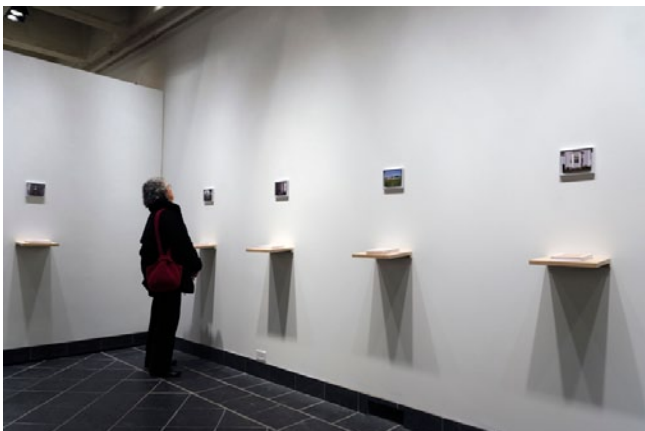
"The photographs submitted by the Prison Law Office and San Francisco law firm Rosen Bien Galvan & Grunfeld LLP were a critical part of the victory. The low-resolution digital images are nothing special; aesthetically they are the antithesis of art or photographic narrative. And yet no photojournalist or documentary photographer's works have achieved a structural change and widespread benefit as profound as the 200 evidentiary images from *Brown v. Plata* and the consequent appeals."



Josh Begley's Prison Map, aerial views of prisons across the country.



Josh Begley: Facility 492



Mark Strandquist's *Some Other Places We've Missed* asks, "If you had a window in your cell, what place from your past would it look out to?" The installation pairs what the prisoners wrote with 4x6" prints — the largest allowed — of the proxy scenes.

Installation photographs by Stephen Perloff

## WHAT IS A PHOTOGRAPH? & CAPA IN COLOR AT ICP



ICP curator Carol Squiers discusses Matthew Brandt's *Grays Lake, ID 7*, at the press preview for "What Is a Photograph?," a provocative, challenging, and insightful show at ICP, on January 30. Top right: Squiers discusses Alison Rossiter's cameraless images made on expired photographic paper. Below right: a Marlo Pascual work reminiscent in a way to Robert Rauschenberg's *Monogram*, 1955-59, that incorporates a stuffed goat.



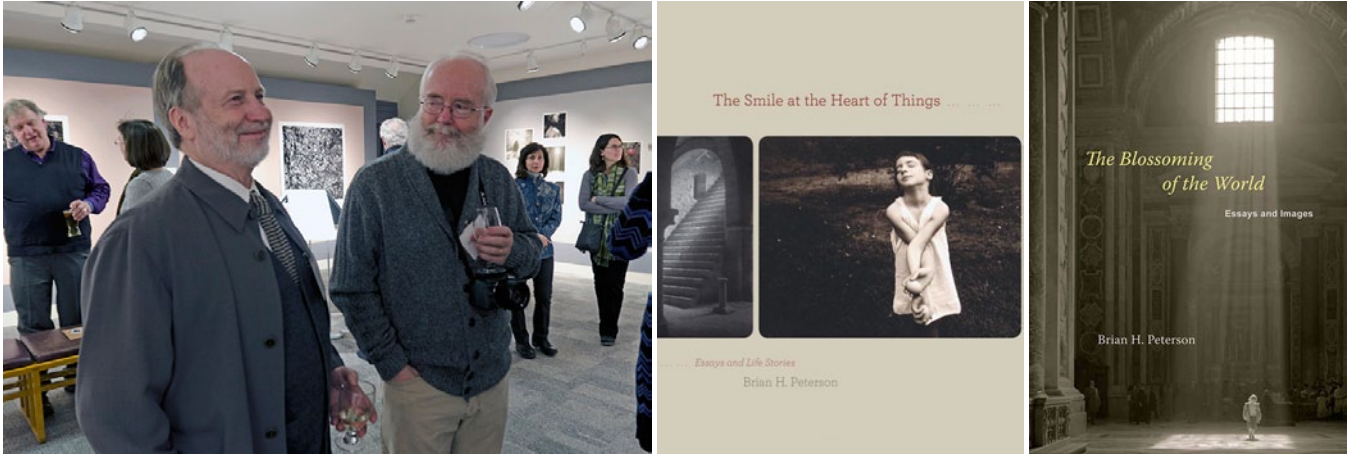
Rebecca Robertson, Photo Editor at ARTnews and a Haverford College alum, at the entrance to "Capa in Color" at ICP.



Photographs by Stephen Perloff.

ICP curator Cynthia Young discusses Capa's color work at the press preview for "Capa in Color" at ICP.

## AROUND AND ABOUT IN JANUARY AND FEBRUARY



*Charles Stainback, Director of Ursinus College's Berman Museum, and Brian Peterson at the opening of Brian's exhibition at the Museum on January 30.*

An artist, curator, critic, and arts administrator in the Philadelphia area for more than three decades, Brian H. Peterson recently retired as chief curator at The Michener Museum in Doylestown, PA, where he worked from 1990 to 2013. At the Michener he organized numerous important historical and contemporary exhibitions in a variety of media, most recently the quite extraordinary "Making Magic: Beauty in Word and Image," now available as a touring exhibition from ExhibitsUSA. (Full disclosure: Peterson included one of my images in the exhibition and catalogue.) His memoir *The Smile at the Heart of Things* (2009), was co-published by the Michener and Tell Me Press. His most recent book, *The Blossoming of the World* (2011), also was published by Tell Me Press. Together these books offer many honest, heart-felt moments into the life of an artist and reveal Peterson's clear-eyed and often moving perceptions about the creative process, and love, and loss.

Peterson is represented by Santa Bannon/Fine Art Gallery in Bethlehem, PA, [www.santafineart.com](http://www.santafineart.com), 610/997-5453.

On February 5, I gave a lecture at The Richard Stockton College in New Jersey about Ansel Adams's photographs of the Manzanar internment camp in 1943, also comparing them to later photographs by Joan Myers, in conjunction the exhibition of work by Kevin J. Miyazaki and Jon Yamashiro in the Stockton Art Gallery ([intraweb.stockton.edu/eyos/page.cfm?siteID=230&pageID=1](http://intraweb.stockton.edu/eyos/page.cfm?siteID=230&pageID=1)). After the lecture we went to the gallery for Kevin's gallery talk. It turns out the Quakers were very concerned about the treatment of the Japanese during World War II (110,00 Japanese on the West Coast, two-thirds of them American citizens, were interned in ten camps during the war). After the war the Quakers brought a number of Japanese-Americans to New Jersey and found many of them work in a local seafood canning plant, so now there is a Japanese community in the Stockton area. What was totally amazing and a surprise to me was that a number of former internees came to the lecture and Kevin's gallery talk. It was a wonderful experience to meet and talk to these people. I photographed the group in the gallery.



*Kevin Miyazaki (third from right) and a group of Japanese-Americans, most of whom had been interned as children in U.S. internment camps during the Second World War. The mother of the woman in the colorful blouse in the center was Ansel Adams's guide at the Manzanar camp in 1943.*



*Vita Litvak at the opening of her exhibition of photographs of the post-Soviet nation of Transnistria at the Atrium Gallery at Haverford College on February 7. Litvak was born in Moldova in Transnistria and emigrated to the United States in 1992. She is now a visiting professor at Haverford.*

*Photographs by Stephen Perloff.*

# The Photo Review Newsletter

## Advertising Rates

**The Photo Review** Publishing since 1976, The Photo Review is a highly acclaimed critical journal of photography of international scope. The Photo Review Newsletter lists exhibitions throughout the Mid-Atlantic region — New York, Pennsylvania, New Jersey, Delaware, Maryland, Washington, DC, and northern Virginia — and from California, as well as calls for work and news from around the world.

**Circulation** 2,000.

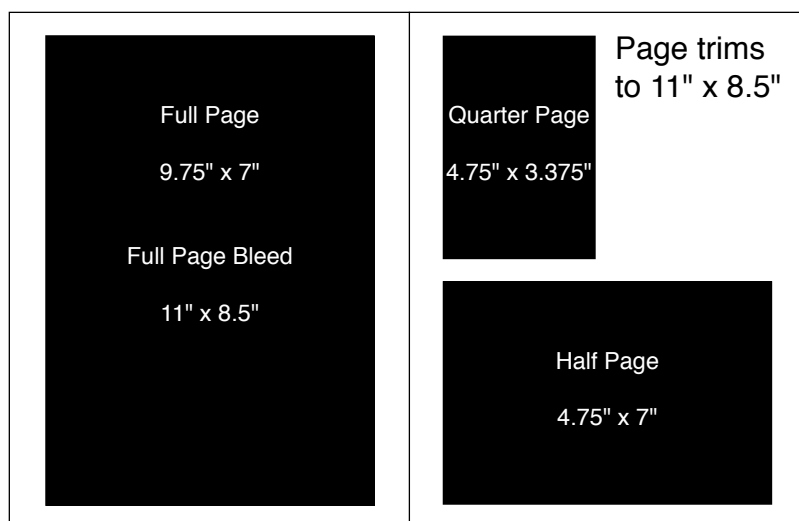
**Frequency** The Photo Review Newsletter is published eight times a year and delivered digitally in full-color.

**Readership** Our readers include leading photographers, gallery owners, museum curators, historians, and collectors, as well as serious amateur photographers and photography students. They attend gallery and museum exhibitions, and workshops, conferences and lectures. They also collect photographs. They are frequent buyers of photographic equipment and supplies, books, and periodicals.

**Distribution** About 60% of our subscribers are concentrated in the Mid-Atlantic region with the rest distributed throughout the country. A small number live in Canada and overseas.

**Rates**

**Size**  
 Image to accompany listing .....\$50  
 (300 dpi x 3.375" or 1024 pixels wide)  
 Quarter Page .....\$100  
 Half Page .....\$175  
 Full Page .....\$325



**Deadlines**  
 3–6 weeks before event (call or email for precise deadlines)

**Media**  
 We can accept files in InDesign, or as PDFs, JPEGs, or TIFFs by email or on CD.

**Contact**  
 The Photo Review  
 140 East Richardson Avenue  
 Suite 301  
 Langhorne, PA 19047-2857  
 USA  
 Telephone: 215/891-0214  
 Fax: 215/891-9358  
 Email: info@photoreview.org



## IN UPCOMING ISSUES OF THE PHOTO REVIEW JOURNAL

- A. D. Coleman on Robert Heinecken
- Robert Raczka on Teenie Harris
- Mary McNichols Interviews John Ganis
- David Schonauer Interviews Vicky Goldberg on Presidential Photography
- A. M. Weaver on Don Camp
- Dan Marcolina on iPhone Photography
- Jayme Guokas Interviews Emmet Gowin
- Jack Lubiner on Charles Henry Breed
- Melinda Parsons on Albert Winn
- The Photo Review Competition Winners
- Book reviews and more

The Photo Review receives state arts funding support through a grant from the Pennsylvania Council on the Arts, a state agency funded by the Commonwealth of Pennsylvania and the National Endowment for the Arts.



### Board of Directors of The Photo Review

Anthony Bannon	Harris Fogel
Mark Colatrella	A. Lee Osterman
Dominic Episcopo	Stephen Perloff
Alvin Gilens	William Earle Williams
Candace Steele Flippen	

### Board of Advisors of The Photo Review

A. D. Coleman	Jeannie Pearce
Christine Filippone	Mark Power
Alex Novak	Richard Siegesmund

**The Photo Review** (ISSN: 0363-6488) is published quarterly.  
Editorial Office: 140 E. Richardson Ave., Langhorne, PA 19047.  
Phone: 215/891-0214, Fax: 215/891-9358,  
E-mail: info@photoreview.org,  
Website: www.photoreview.org  
Editor-in-Chief: **Stephen Perloff**  
Assistant Editor: **Naomi Mindlin**  
Newsletter Editor and Editorial Assistant: **Charles Mann**  
Senior Contributing Editor: **Nancy Brokaw**  
Contributing Editors: **A. D. Coleman, Mark Power, Jean Dykstra**  
Subscriptions are \$45 per year in the US for the quarterly journal and the newsletter issued eight times per year.  
Copyright 2014, The Photo Review.



**John Woodin:** Detroit, Michigan, Former Residential Neighborhood, at the Crane Arts Building, Philadelphia, PA.

## SUBSCRIPTIONS

Subscriptions to *The Photo Review* are \$45 for one year, \$80 for two years, for the quarterly journal and the newsletter, issued eight times a year. Please add \$15 per year from Canada, \$20 per year from other countries.

Please send me *The Photo Review* for  one year  two years.

Name

Address

City

State

Zip Code

Email Address

Make checks payable to The Photo Review, 140 East Richardson Avenue, Suite 301, Langhorne, PA 19047-2857.